

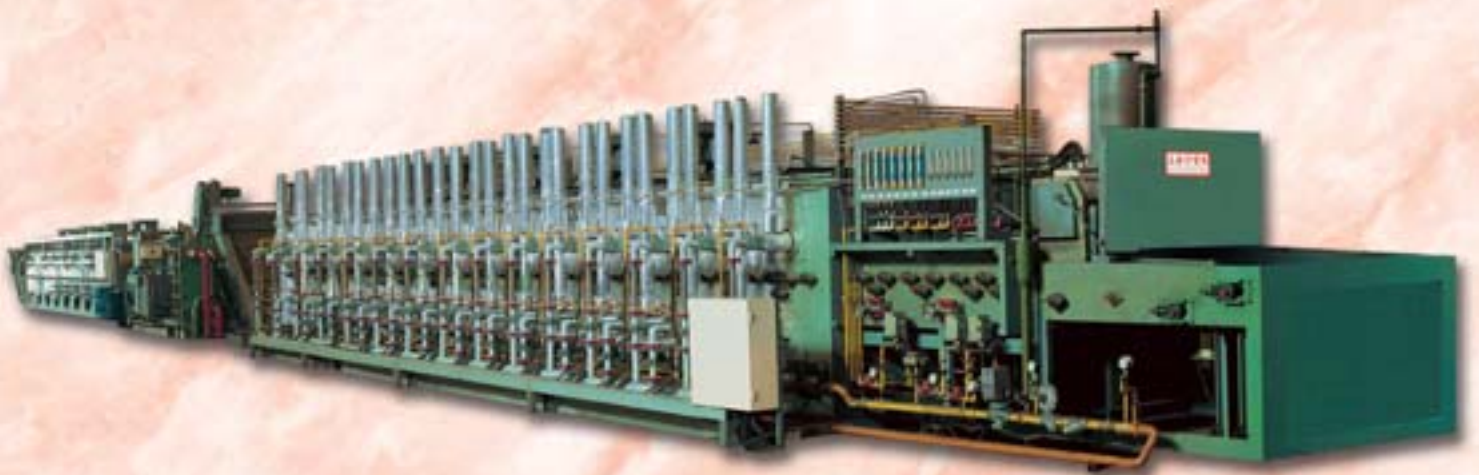


**SAN YUNG**

**ELECTRIC**

**FURNACES**

**HEAT TREATING EQUIPMENT**



**三永電熱處理爐**



# 三永電熱處理爐



總裁：楊永吉先生  
Chairman: Yang Yung-Chi

三永公司是高品質熱處理設備的製造商。自1970年成立以來，秉持著“穩健成長，以客為尊，塑造專業形象”的經營理念，不斷地致力於新產品新技術的研究開發，力求提高熱處理品質的優越性及降低客戶的生產成本。公司除了為客戶提供品質卓越的設備外，還提供專業操作人員技術培訓。在公司永續經營的理念下，以提升客戶滿意度為目標，使客戶得到值得信賴的服務，從而回饋社會。

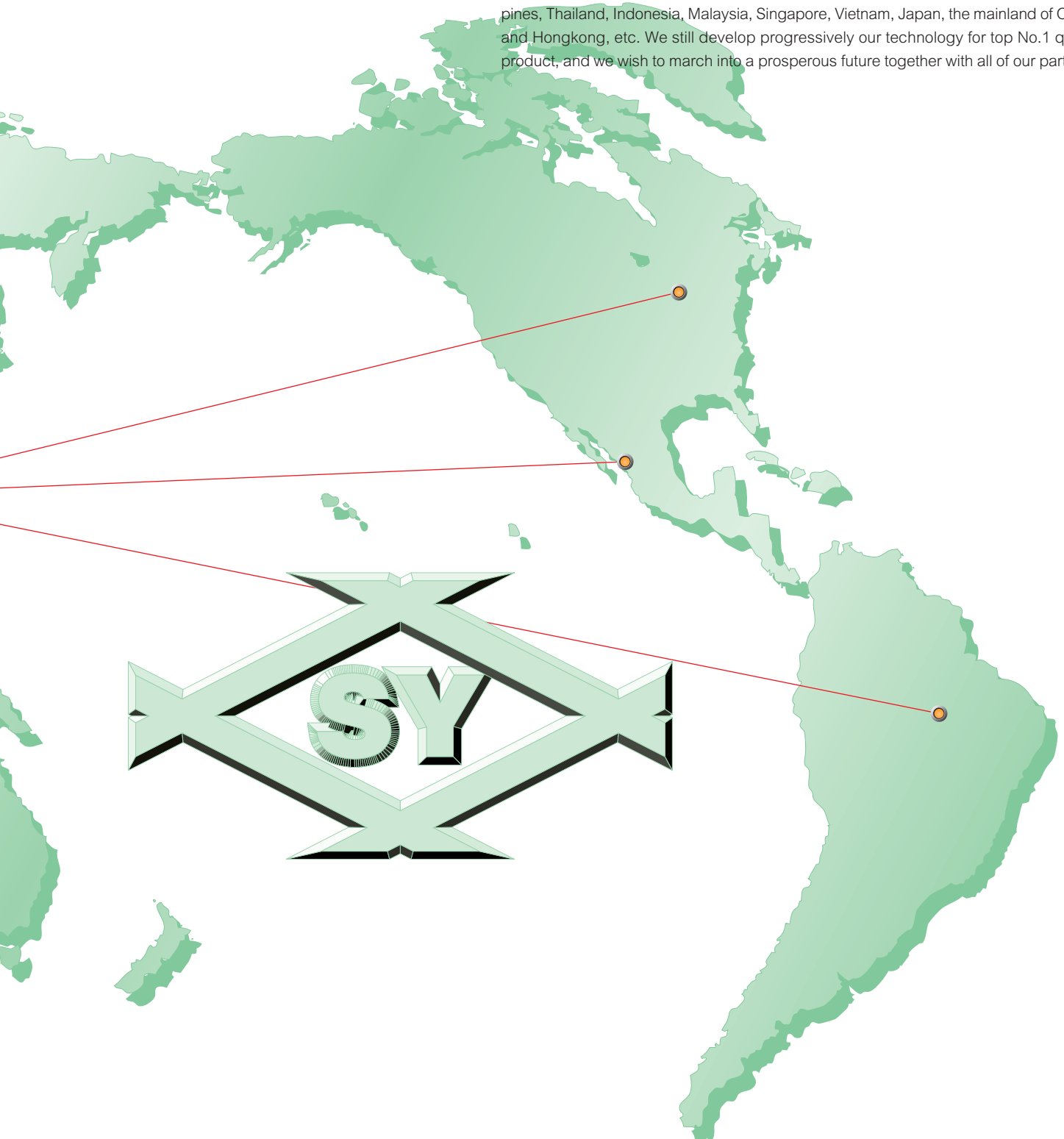
San Yung Electric Heat Machine Co., Ltd. is a Professional manufactory to have machines for high-quality heat treatment. Since establishment in 1970, we adhere to our operational principle with "stable growth and specialized know-how" to serve our customers. As we keep on researching and developing product with new technology, we desire to enhance our quality product and lower down the cost for the customers, Except providing the high quality products for our customers, we also support them with specialists for training purpose. Under the idea of everlasting operation, our target is to let our customers always be satisfactory and serve them with a reliable faith to return for our society.



# SAN YUNG ELECTRIC HEAT TREATING FURNACE

三永公司成立迄今，三永的品牌，一直深受廣大客戶的支持及信賴，目前三永的銷售業務已遍及美國、德國、意大利、巴西、墨西哥、俄羅斯、捷克、土耳其、伊朗、南非、印度、孟加拉、杜拜、菲律賓、泰國、印尼、馬來西亞、新加坡、越南、日本、中國大陸、香港……等等。三永仍將繼續開拓進取，以一流的技術、一流的品質與各界攜手共進，共創輝煌！

So far, San Yung's brand has been affirmed by all of our customers, and currently our sales network has reached all over the world, including: USA, Germany, Italy, Brazil, Mexico, Russia, Czech, Turkey, Iran, South Africa, India, Bangladesh, Dubai, Philippines, Thailand, Indonesia, Malaysia, Singapore, Vietnam, Japan, the mainland of China, and Hongkong, etc. We still develop progressively our technology for top No.1 quality product, and we wish to march into a prosperous future together with all of our partners.



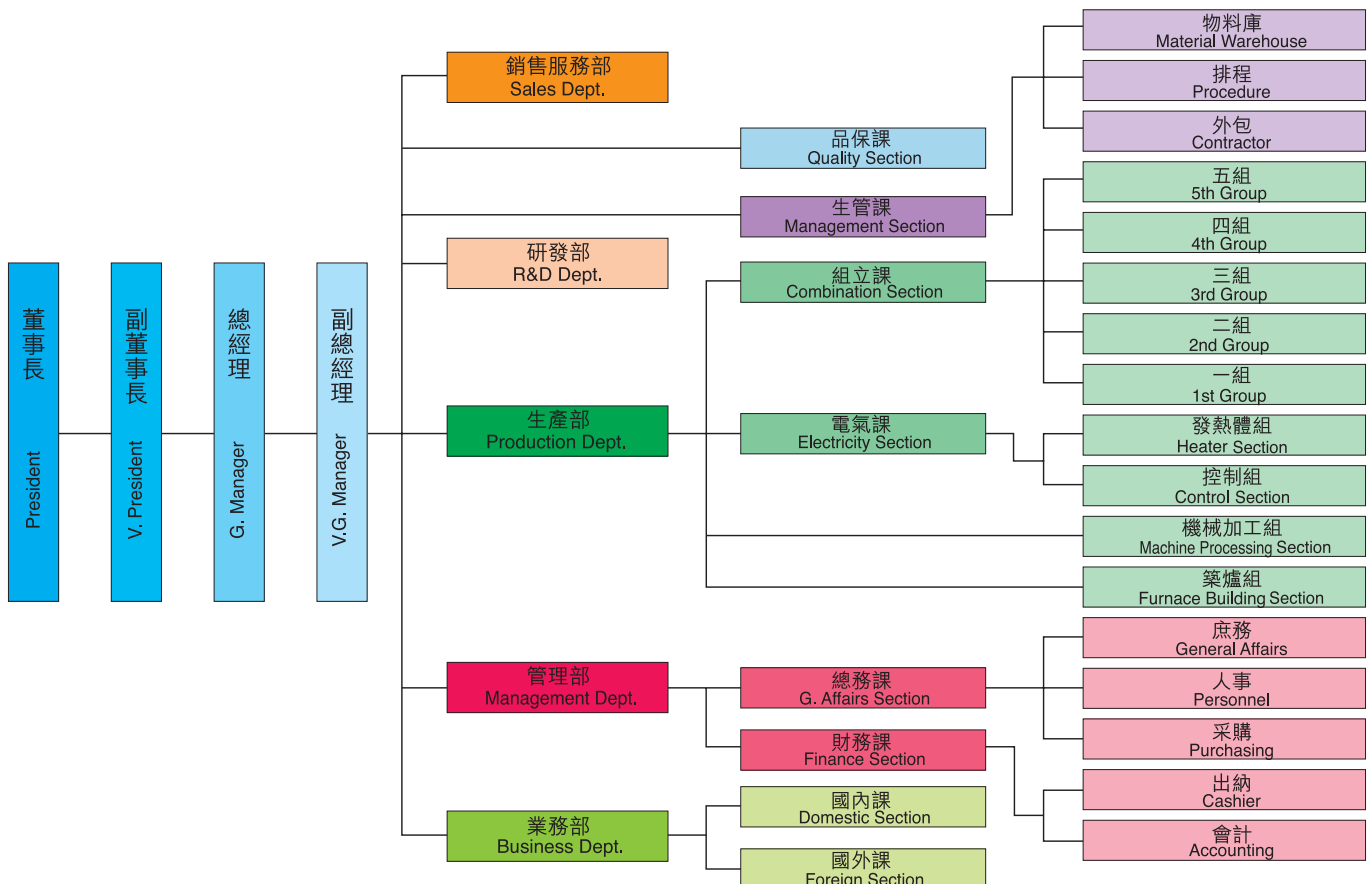




# 三永電熱處理爐

臺灣三永公司 1970 年成立，廠地面積 28500 平方米。

San Yung Electric Heat Machine Co., Ltd. in Taiwan was founded in 1970 with planthouse area of 28,500 square meters.

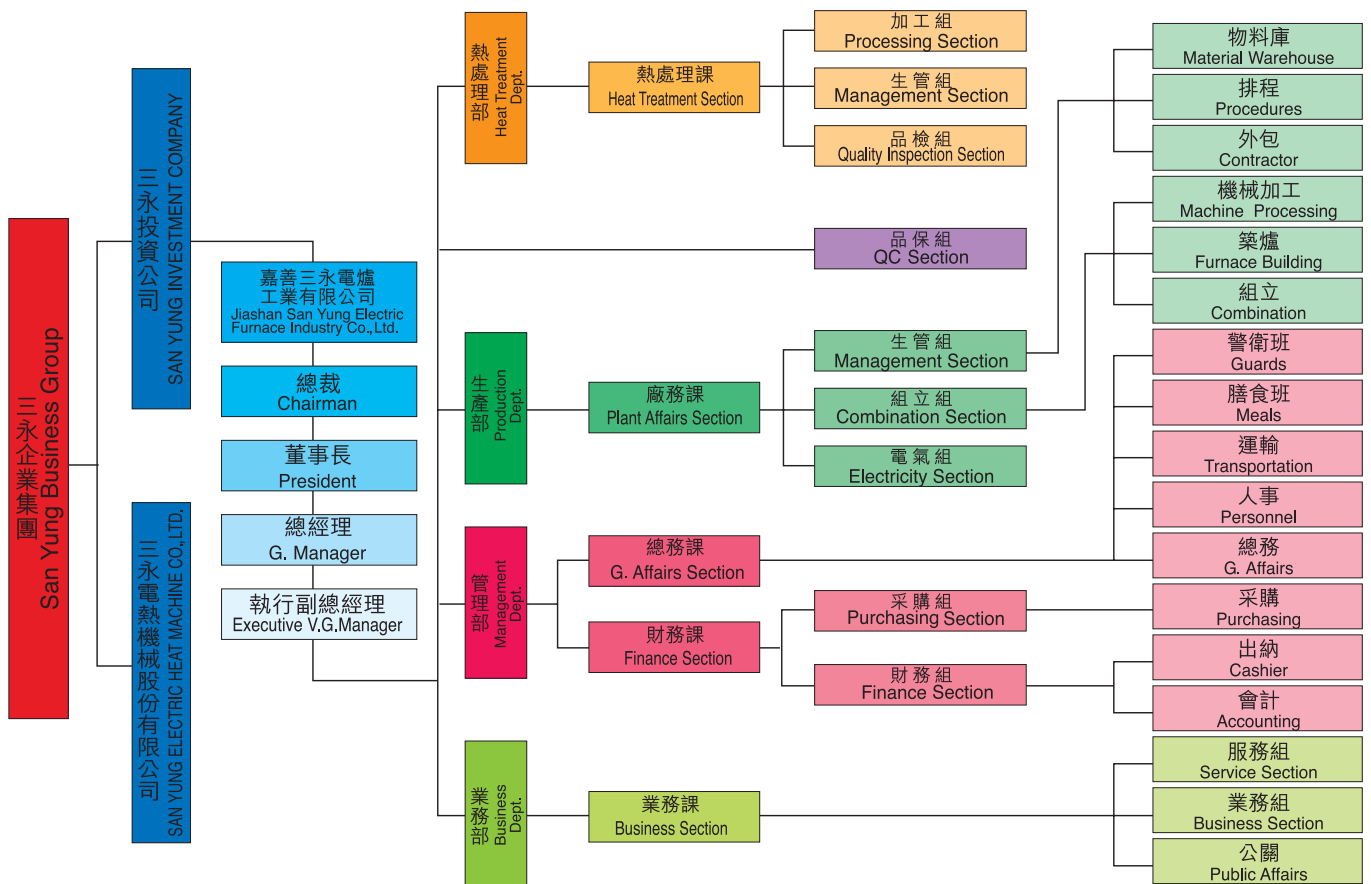




# SAN YUNG ELECTRIC HEAT TREATING FURNACE

嘉善三永公司 1999 年成立，廠地面積 48000 平方米。

Jiashan San Yung Electric Furnace Industry Co., Ltd. was founded in 1999 with planhouse area of 48,000 square meters.



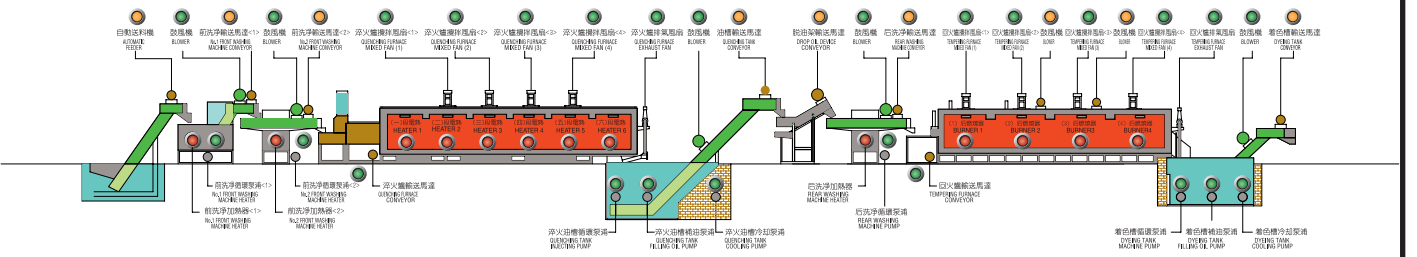


# 三永電熱處理爐

## 連續式光輝滲碳（調質）淬火爐用途 APPLICATIONS OF CONTINUOUS BRIGHT CARBURIZING (TEMPERING) QUENCHING FURNACE



### 連續式淬火爐負載運轉指示燈 THE CONTINUOUS HARDENING QUENCHING FURNACE RUNNING SIGN LAMP



三永電熱機械股份有限公司

SAN YUNG ELECTRIC HEAT MACHINE CO., LTD.



汽機車、腳踏車零件類  
Parts of car, motorcycle & bicycle



螺絲、螺帽類  
Screw, nut



五金零件類  
Hardware parts



手工具類  
Hand tools



文具、刀具、夾具類  
Stationery, knife tool, fixture





# SAN YUNG ELECTRIC HEAT TREATING FURNACE

**SY-800A** 磁帶式送料機  
MAGNETIC-BELT TYPE FEEDER



**SY-800B** 階梯式送料機  
STAIR TYPE FEEDER



**SY-800C** 振動式送料機  
VIBRATING TYPE FEEDER



**SY-801** 吸熱型瓦斯變成爐(RX發生機)  
ENDOTHERMIC TYPE GAS GENERATOR (RX GAS)



**SY-801A** 溫度自動控制盤  
AUTOMATIC TEMPERATURE CONTROL PANEL



**SY-802A** 雙點式 **SY-802B** 單點式  
O<sub>2</sub> 碳濃度自動控制系統  
SY-802A DOUBLE-SPOT TYPE  
SY-802B SINGLE-SPOT TYPE  
O<sub>2</sub> AUTOMATIC CARBON  
POTENTIAL CONTROL SYSTEM





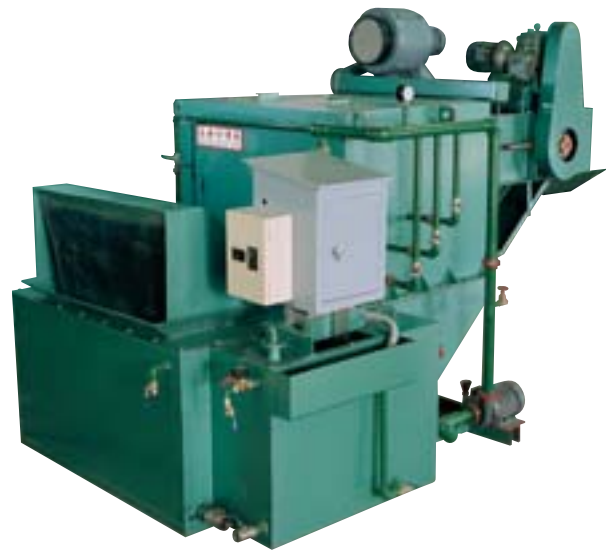


# 三永電熱處理爐

**SY-803** 甲醇儲存槽  
METHANOL STORAGE TANK



**SY-804** 前脫脂洗淨槽  
FRONT DEGREASING & WASHING TANK



**SY-805** 連續式光輝滲碳(調質)淬火爐(主體)  
CONTINUOUS BRIGHT CARBURIZING (TEMPERING) QUENCHING FURNACE(MAIN FURNACE)



**SY-806** 淬火冷却油(水)槽  
QUENCHING COOLING  
OIL(WATER)TANK



**SY-807** 后脫脂洗淨槽  
REAR DEGREASING & WASHING TANK



# SAN YUNG ELECTRIC HEAT TREATING FURNACE

**SY-808** 連續式熱風回火爐  
CONTINUOUS HOT BLAST  
TEMPERING FURNACE

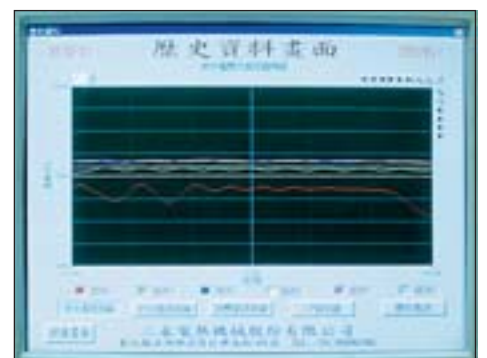


**SY-809** 雙層式著色槽  
DOUBLE-LAYER DYEING TANK

**SY-810A · 810B** 溫度自動控制盤  
AUTOMATIC TEMPERATURE  
CONTROL PANEL



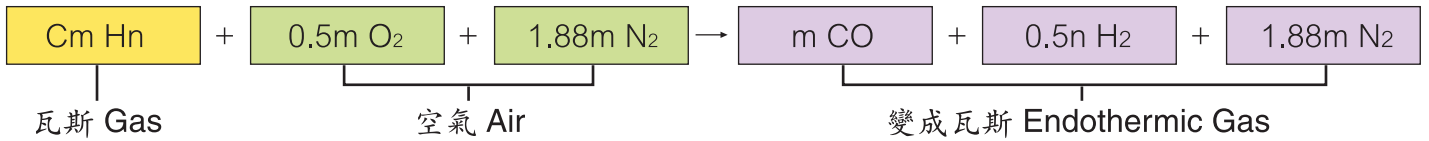
**SY-810C** 電腦程式控制系統  
COMPUTER PROGRAM CONTROL SYSTEM





# 三永電熱處理爐

## 瓦斯變成理論 GAS REFORMING THEORY



瓦斯來源 Gas Source	m	n	瓦斯/空氣比例 Gas/Air Ratio	重組比例 Reforming Rate
甲烷 Methane CH <sub>4</sub>	1	4	1:2.38	1.44
丙烷 Propane C <sub>3</sub> H <sub>8</sub>	3	8	1:7.14	1.55
丁烷 Butane C <sub>4</sub> H <sub>10</sub>	4	10	1:9.52	1.57

## SY-800A 磁帶式送料機 SY-800B 階梯式送料機 SY-800C 振動式送料機

### SY-800A MAGNETIC-BELT TYPE FEEDER SY-800B STAIR TYPE FEEDER SY-800C VIBRATING TYPE FEEDER

- 用途：運送(小、中、大件)處理物至前脫脂洗淨槽，使處理物品均勻進入爐內熱處理。(三種型式，可任選購)
- APPLICATIONS: Delivering (small, medium, large work piece) the object for treatment to pre-degreasing & washing tank and let them have a uniform heat treatment.(Available 3 models for optional)

## SY-801 吸熱型瓦斯變成爐

### ENDOTHERMIC TYPE GAS GENERATOR

- 特點：① 瓦斯控制保護系統，安全耐用，露點控制穩定，指示精確，並且可與CO<sub>2</sub>控制器連結使用，達到自動控制的目標。② 發熱氣體效率高，爐室可以打開，便於保養和維護。③ 管路設計預留清除雜物接頭，便於清除雜物。
- FEATURES: ① Gas control with protection system, safe and durable for use, stable control on dew point control with precise indication, available to be connected with CO<sub>2</sub> controller for auto control purpose.  
② Heater's design with high efficiency, and the furnace can be opened for convenient maintenance and repair purpose.  
③ Reserved connectors for simple and easy cleaning the trash inside the pipe.

## SY-802A 雙點式 SY-802B 單點式 O<sub>2</sub> 碳濃度自動控制系統

### SY-802A DOUBLE-SPOT TYPE SY-802B SINGLE-SPOT TYPE O<sub>2</sub> CARBON POTENTIAL AUTO CONTROL SYSTEM

- 特點：① 採用美國進口 O<sub>2</sub> 碳濃度自動控制系統 (BARBER COLMAN)，控制精度 ± 0.03% (碳濃度)。  
② 設計組成：a. 氧探頭 b. 電磁閥 c. 記錄系統 (溫度、碳勢、氣體流量) d. 燃燒空氣，標準空氣管路。
- FEATURES: ① Adopts BARBER COLMAN for O<sub>2</sub> Carbon Potential Auto Control System to control precisely ± 0.03% (carbon potential)  
② Composed of (1) Oxygen probe (2) Solenoid Valve  
(3) Recording system (Temperature, carbon, gas flow) (4) Burning air standard piping.

## SY-803 甲醇儲存槽

### METHANOL STORAGE TANK

- 特點：① 甲醇採用氣化室爐內裂解，減少電力及甲醇消耗。  
② 可代替瓦斯變成爐，節約成本。
- FEATURES: ① Methanol adopts air decomposition in the furnace to reduce the consumption of electricity and methanol.  
② It is able to replace for the use of gas and saves the cost.



## SY-804 前脫脂洗淨槽 SY-807 后脫脂洗淨槽

### SY-804 FRONT DEGREASING & WASHING TANK SY-807 REAR DEGREASING & WASHING TANK

- 特點：① 洗淨槽配有加熱器，利用滲碳爐預熱區的熱水加熱器，提供熱水，節省電力。② 洗淨槽配備油水分離機及強風吹干設備。③ 將附著在處理物上的淬火油，送回到淬火油槽再使用。
- FEATURES: ① Tank has attached with heater to supply hot water with preheating zone in carburizing furnace to save electricity.  
② It has equipped with oil and water separator and strong air blower.  
③ Tempering oil staining on the object under treatment can be reused after delivering back to the tank.

## SY-805 連續式光輝滲碳(調質)淬火爐(主體)

### CONTINUOUS BRIGHT CARBURIZING (TEMPERING) QUENCHING FURNACE(MAIN FURNACE)

- 特點：① 省電：使用高強度矽酸鈣板、陶瓷纖維板、高斷熱的保溫材料，可達電熱最高效率。② 操作：採用自動化控制運轉操作，節省人力。③ 品質：採用多段式控制攪拌風扇，溫度均勻，提高品質。④ 爐氣：採用變成爐或甲醇裂解，爐氣穩定，確保品質。⑤ 穩定性：CP 值公差  $\pm 0.03\%$ (碳濃度)，爐內均勻性  $\pm 5^{\circ}\text{C}$  ⑥ 採用自潤軸承（可節省保養，打黃油）
- FEATURES: ① Electricity-saving: adopts high tensile calcium silicate board, ceramic fibre board, heat-resistant material for high performance.  
② Operation: adopts automatic control to save manpower.  
③ Quality: equipped a variable step stirring fan in the furnace to get uniform temperature for high quality.  
④ Gas: adopts gas generator or methanol decomposition to stabilize gas and to ensure for quality.  
⑤ Stability: CP value tolerance  $\pm 0.03\%$  (carbon potential), and temperature equally dispersed at  $\pm 5^{\circ}\text{C}$ .  
⑥ Adopts self-lubricant bearing (to save for maintenance with greasing)

## SY-806 淬火冷卻油(水)槽

### QUENCHING COOLING OIL(WATER) TANK

- 特點：① 採用板式熱交換器，能迅速地控制及調整油(水)溫度。② 油(水)槽噴灑冷卻系統，依物品大小，可任意調整噴灑速度。③ 油(水)槽設有過濾網抽換式設備，在作業上，不致於因雜物累積，造成冷卻熱交換器堵塞。
- FEATURES: ① Adopts board-type heat exchanger to control rapidly the temperature of oil (water).  
② The injection cooling system in the tank, speed of injection can be adjusted freely according to the size of work piece.  
③ Filter is equipped in the tank, and so the dirt will not be stored in exchanger to lose its cooling function.

## SY-808 連續式熱風回火爐

### CONTINUOUS HOT BLAST TEMPERING FURNACE

- 特點：① 發熱體採用上下排列設計，溫度均勻，壽命長，故障率低。② 爐內配有攪拌風扇，使爐室內的溫度均勻。
- FEATURES: ① Heater adopts up-down design to get uniform temperature and has long service life and low faulty rate.  
② The stirring fan furnished in the furnace makes uniform temperature in the furnace and good hardness.

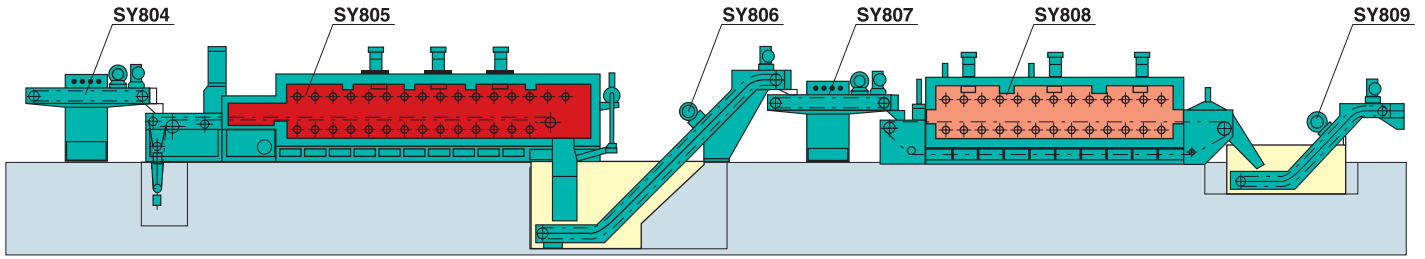
## SY-809 雙層式著色槽

### DOUBLE-LAYER DYEING TANK

- 特點：① 利用回火余熱來著色，節約能源。② 採用高性能熱交換器，防止著色槽油溫太高，以免發生火災。③ 著色槽採用雙層式，設有循環幫浦，可任意抽取著色劑。
- FEATURES: ① Making use of tempering heat for dyeing to save energy.  
② Adopts high-efficiency heat exchanger to prevent fire caused by overheated oil.  
③ Uses double-layer type dyeing tank with circulation pump, and the color of dyeing can be optional.



# 三永電熱處理爐



## 全套連續爐之產量及電力 THE OUTPUT AND ELECTRICITY OF FULL-LINE CONTINUOUS FURNACE

型式 Model	中高碳鋼一小時產量 Treating Capacity Per Hour to Middle or High Carbon Steel (kg)	中高碳鋼一個月產量 Treating Capacity Per/Month to Middle or High Carbon Steel (Tons)	低碳鋼一小時產量 Treating Capacity/Per Hour to Low Carbon Steel 1018C(kg)	低碳鋼一個月產量 Treating Capacity Per/Month to Low Carbon Steel (Tons)	全套總輸出電力 Whole-set Total Power Output (kw)	全套使用電力 中碳85%/低碳70% Whole-set Power Used Middle Carbon 85% Low Carbon 70% (kw)	全套總長度 Whole-set Total Length (m/m)
<b>SY-805-A</b>	124-138	77-86	48-69	30-43	177-183	150/123	25495
<b>SY-805-1</b>	198-220	123-138	84-120	52-75	203-218	173/142	27995
<b>SY-805-2</b>	352-385	220-242	204-240	127-150	290-320	247/203	31495
<b>SY-805-3</b>	414-483	259-299	313-350	195-218	353-393	300/247	31995
<b>SY-805-4</b>	506-572	316-358	413-463	258-289	439-464	373/307	31995
<b>SY-805-5</b>	720-780	450-486	546-598	341-373	513-543	436/359	35995
<b>SY-805-6</b>	1000-1100	624-686	833-917	520-572	615-655	522/430	39430
<b>SY-805-7A</b>	1250-1375	780-858	1040-1146	649-715	773-828	657/541	39430
<b>SY-805-7</b>	1500-1650	936-1030	1249-1375	779-858	928-993	788/650	39430
<b>SY-805-8</b>	1800-1980	1123-1236	1499-1650	935-1030	1105-1175	939/774	43430

## 吸熱型瓦斯變成爐

## ENDOTHERMIC TYPE GAS GENERATOR

\* 一個月產量以26天計算  
\* Monthly (26 working days tons)

型式 Model	氣體發生量 Gas Producing capacity (m <sup>3</sup> /hr)	電力 Power (kw)	爐外尺寸 Outside Dimension(m/m)		
			寬 Width	高 Height	長 Length
<b>SY-801-A</b>	15	34-42	1530	2750	2200
<b>SY-801-1</b>	20	34-42	1530	2750	2200
<b>SY-801-2</b>	25	34-42	1530	2750	2200
<b>SY-801-3</b>	30	34-42	1530	2750	2200
<b>SY-801-4</b>	35	34-42	1530	2750	2200
<b>SY-801-5</b>	45	34-42	1530	2750	2200
<b>SY-801-6</b>	55	34-42	1530	2750	2200
<b>SY-801-7A</b>	75	50-55	1800	2750	2500
<b>SY-801-7</b>	75	50-55	1800	2750	2500
<b>SY-801-8</b>	75	50-55	1800	2750	2500

## 連續式光輝滲碳(調質)淬火爐(主體) CONTINUOUS BRIGHT CARBURIZING (TEMPERING) QUENCHING FURNACE (MAIN FURNACE)

型式 Model	中高碳鋼一小時產量 Treating Capacity/Per Hour to Middle or High Carbon Steel (kg)	低碳鋼一小時產量 Treating Capacity/Per Hour to Low Carbon Steel (kg)	網寬 Conveyor Width (m/m)	爐內高度 Inside Height (m/m)	加熱長度 Length of Heating Section (m/m)	入口長度 Inlet Length (m/m)	電力 Power (kw)
<b>SY-805-A</b>	124-138	48-69	400	100	3000	3500	54-60
<b>SY-805-1</b>	198-220	84-120	400	100	4000	3500	75-90
<b>SY-805-2</b>	352-385	204-240	500	100	5500	3500	120-150
<b>SY-805-3</b>	414-483	313-350	600	100	6000	3500	160-200
<b>SY-805-4</b>	506-572	413-463	800	100	6000	3500	225-250
<b>SY-805-5</b>	720-780	546-598	800	100	8000	3500	270-300
<b>SY-805-6</b>	1000-1100	833-917	800	100	10000	3500	360-400
<b>SY-805-7A</b>	1250-1375	1040-1146	1000	100	10000	3500	450-500
<b>SY-805-7</b>	1500-1650	1249-1375	1200	100	10000	3500	540-600
<b>SY-805-8</b>	1800-1980	1499-1650	1200	100	12000	3500	630-700

# SAN YUNG ELECTRIC HEAT TREATING FURNACE

## 淬火冷卻油(水)槽

### QUENCHING COOLING OIL (WATER) TANK

型式 Model	網寬 Conveyor Width (m/m)	電力(備用) Power(Spared) (kw)	油(水)槽容量 Capacity of Oil (Water) Tank (ø)	油(水)冷卻循環幫浦 Oil(Water)Cooling pump (HP)	噴射循環幫浦 Injection Circulation pump (HP)	油(水)槽外部尺寸 Outside Dimension of Oil (Water) Tank(m/m)		
						寬 Width	高 Height	長 Length
SY-806-A	800	10	6900	3	3	1320	2000	4200
SY-806-1	800	10	6900	3	3	1320	2000	4200
SY-806-2	1000	10	8000	3	5	1530	2000	4200
SY-806-3	1000	10	8000	3	5	1530	2000	4200
SY-806-4	1200	20	9100	5	7 1/2(10)	1730	2000	4200
SY-806-5	1200	20	9100	5	7 1/2(10)	1730	2000	4200
SY-806-6	1200	20	9100	7 1/2	7 1/2(10)	1730	2000	4200
SY-806-7 A	1400	30	10100	10	10	1930	2000	4200
SY-806-7	1600	30	11200	10	10	2130	2000	4200
SY-806-8	1600	30	11200	15	15	2130	2000	4200

## 前(后)脫脂洗淨槽

### FRONT(REAR)DEGREASING & WASHING TANK

型式 Model	網寬 Conveyor Width (m/m)	補充電力 Supplemental Power (kw)	脫脂槽容量 Capacity of Degreasing Tank (ø)	脫脂循環幫浦 Degreasing Circulation Pump (Hp)	脫脂槽外部尺寸 Outside Dimension of Degreasing Tank(m/m)		
					寬 Width	高 Height	長 Length
SY-804(807)-A	600	20	1660(1050)	2	1710(1390)	2345(1840)	3430(3000)
SY-804(807)-1	600	20	1660(1050)	2	1710(1390)	2345(1840)	3430(3000)
SY-804(807)-2	700	20	1990(1100)	2	1910(1490)	2345(1840)	3430(3000)
SY-804(807)-3	800	20	2160(1150)	2	2010(1590)	2345(1840)	3430(3000)
SY-804(807)-4	1000	20	2500(1350)	2	2220(1790)	2345(1840)	3430(3000)
SY-804(807)-5	1000	20	2500(1350)	2	2220(1790)	2345(1840)	3430(3000)
SY-804(807)-6	1000	20	2500(1350)	3	2220(1790)	2345(1840)	3430(3000)
SY-804(807)-7A	1200	30	2720(1500)	3	2420(1990)	2345(1840)	3430(3000)
SY-804(807)-7	1400	30	3270(1800)	5	2690(2190)	2345(1840)	3430(3600)
SY-804(807)-8	1400	30	3270(1800)	5	2690(2190)	2345(1840)	3430(3600)

## 連續式熱風回火爐

### CONTINUOUS HOT BLAST TEMPERING FURNACE

型式 Model	網寬 Conveyor Width (m/m)	爐內高度 Inside Height (m/m)	加熱長度 Length of Heating Section (m/m)	入口長度 Inlet Length (m/m)	出口長度 Outlet Length (m/m)	電力 Power (kw)
SY-808-A	600/530	100	3000/2500	1000	1500	51-75
SY-808-1	600/530	100	4000	1000	1500	56-110
SY-808-2	700/750	100	6000	1000	1500	98-150
SY-808-3	850/850	100	6000	1000	1500	121-150
SY-808-4	1000/1100	100	6000	1000	1500	132-189
SY-808-5	1000/1100	100	8000	1000	1500	161-189
SY-808-6	1000/1100	100	10000	1200	1500	173-252
SY-808-7A	1200/1200	100	10000	1200	1500	190-300
SY-808-7	1400/1400	100	10000	1200	1500	228-300
SY-808-8	1400/1400	100	12000	1200	1500	274-360

## 著色槽

### DYEING TANK

\* 溫度在300°C以下以80%計算  
\* If the temperature is under 300°C,  
then the reckoning is the temperature × 80%

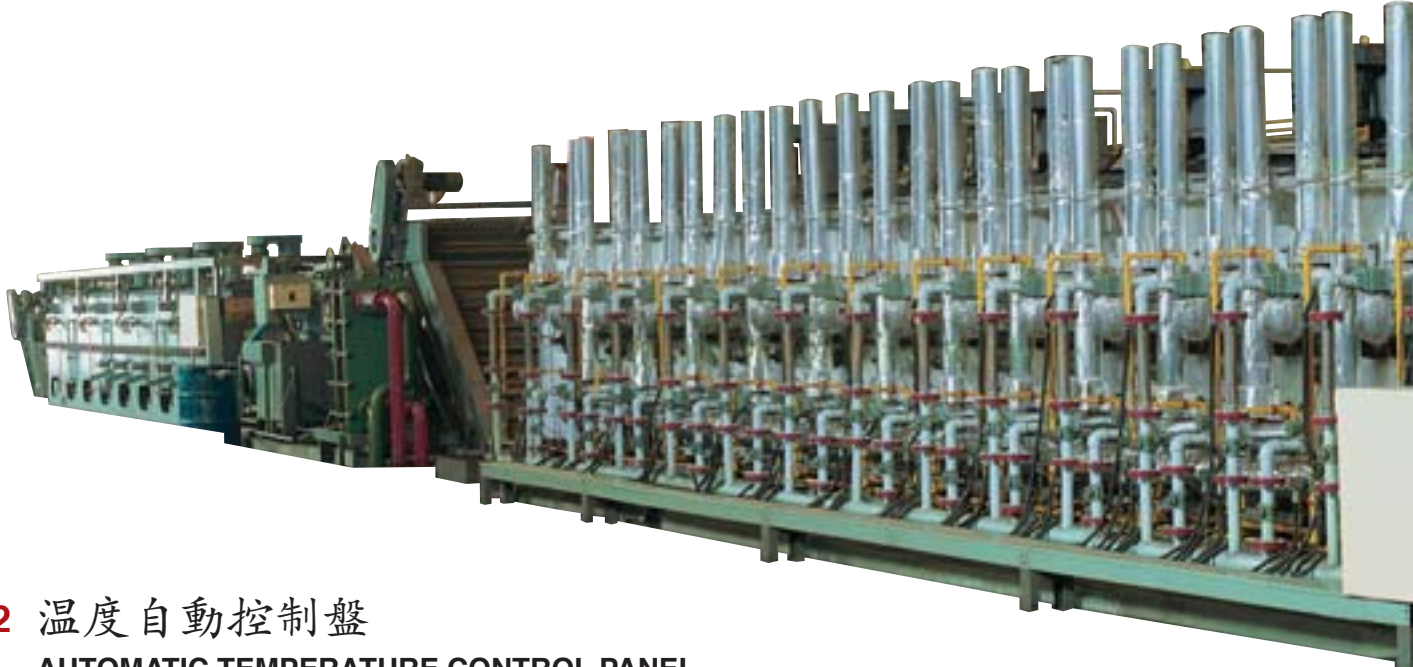
型式 Model	網寬 Conveyor Width (m/m)	著色槽容量 Capacity of Dyeing Tank (ø)	著色循環幫浦 Dyeing Circulation Pump (Hp)	著色槽外部尺寸 Outside Dimension of Dyeing Tank (m/m)		
				寬 Width	高 Height	長 Length
SY-809-A	800	2000	2	1220	1000	2450
SY-809-1	800	2000	2	1220	1000	2450
SY-809-2	800	2000	2	1220	1000	2450
SY-809-3	800	2000	2	1220	1000	2450
SY-809-4	1000	2500	2	1530	1000	2450
SY-809-5	1000	2500	2	1530	1000	2450
SY-809-6	1000	2500	3	1530	1000	2450
SY-809-7A	1200	2830	3	1730	1000	2450
SY-809-7	1400	3150	3	1930	1000	2450
SY-809-8	1400	3150	3	1930	1000	2450





# 三永電熱處理爐

**SY-811** 連續式光輝滲碳(調質)淬火爐(瓦斯加熱)  
CONTINUOUS BRIGHT CARBURIZING  
(TEMPERING)QUENCHING FURNACE (GAS BURNER HEATING TYPE)



**SY-812** 溫度自動控制盤  
AUTOMATIC TEMPERATURE CONTROL PANEL



**SY-813** 發熱型瓦斯變成爐(DX發生機)  
HEATING TYPE GAS GENERATOR (DX GAS)



# SAN YUNG ELECTRIC HEAT TREATING FURNACE



**SY-815** 雙層式著色槽  
DOUBLE-LAYER  
DYEING TANK



**SY-814** 連續式黑化處理爐  
CONTINUOUS BLACKENING  
TREATING FURNACE





# 三永電熱處理爐

## SY-811 連續式光輝滲碳(調質)淬火爐(瓦斯加熱)

### CONTINUOUS BRIGHT CARBURIZING (TEMPERING)QUENCHING FURNACE (GAS BURNER HEATING TYPE)

型式 Model	中高碳鋼產能 Treating Capacity to Middle/High Carbon Steel (Kg/hr)	低碳鋼產能 Treating Capacity to Low Carbon Steel (Kg/hr)	網寬 Conveyer Width (m/m)	爐內高度 Inside Height (m/m)	加熱長度 Length of Heating Section (m/m)	燃燒能力 Combustion Ability (max)kcal/hr	電力 Power (Max)(Kw)
SY-811-1	506-572	413-463	800	100	6000	180000	45
SY-811-2	720-780	546-598	800	100	8000	300000	90
SY-811-3	1000-1100	833-917	800	100	10000	450000	90
SY-811-4	1800-1980	1499-1650	1200	100	12000	690000	135

#### 用途:

適用於螺絲、螺帽、腳踏車零件、手工具、五金零件等之調質滲碳處理。

#### 特點:

- ① 採用美國製造瓦斯燃燒機系統，並安裝原廠的熱交換器，可使燃燒效率提升20%。
- ② 輻射管採用進口耐熱鋼離心鑄造管，變形小，壽命長。
- ③ 溫度控制採用壓力式控制，溫度控制精度其溫差可達要求精度範圍內。
- ④ 採用瓦斯加熱式配合電熱式使用，不但兼具瓦斯與電熱之優點並可以降低生產成本，尤其對大電力申請困難的地方，是最佳的選擇。
- ⑤ 升溫時間較使用電力之升溫時間短，適合較大量生產使用且不受輸出功率之限制影響。

#### APPLICATIONS:

Carburizing or tempering treating to screw, nut, bicycle parts, hand tools, hardware parts, etc.

#### FEATURES:

- ① Adopts U.S.A. gas combustion system and install original brand heat exchanger will rise 20% burning efficiency.
- ② Radiate tube adopts imported heat-resistant steel and centrifugal casting tube, small percentage of deformation and last longer.
- ③ Temperature is controlled by pressure type which can make precise of temperature to needed.
- ④ Heated by gas and electricity to reduce manufacturing cost. It is the best choice for areas having difficulty in applying for lots of electricity.
- ⑤ Temperature-rising takes less time than that uses electricity, suitable for mass production and it is not affected by output power.

## SY-813 發熱型瓦斯變成爐(DX發生機)

### HEATING TYPE GAS GENERATOR (DX GAS)

原瓦斯 Original Gas	瓦斯.空氣比 Proportion of Gas & Air	變成瓦斯組成範圍Composition Range of Gas Generation					
		CO	CO <sub>2</sub>	H <sub>2</sub>	CH <sub>4</sub>	N <sub>2</sub>	H <sub>2</sub> O
CH <sub>4</sub>	1:6~9	8~1	7~10	15~10	約approx.0	68~86	約approx.2
C <sub>3</sub> H <sub>8</sub>	1:11~23	16~1	3~11	20~1	0	59~83	2
C <sub>4</sub> H <sub>10</sub>	1:13~30	18~1	2~3	22~1	0	56~83	2
	CO <sub>2</sub>	CO	H <sub>2</sub>	CH <sub>4</sub>	H <sub>2</sub> O	N <sub>2</sub>	露點Dew point
DX Lean	10.5	1.5	0.8	0.0	0.8	86	+5
DX Rich	5.0	10.5	12.5	0.5	0.8	70.7	+5



#### 用途:

- ① 金屬零件連續黑化回火處理(處理溫度450℃以上)
- ② Rich為還原性氣體、弱脫碳性、碳折出傾向小、適用於低中碳鋼之光輝淬火、退火、焊接等。
- ③ Lean為氧化性氣體、強脫碳性、無碳折出傾向、適用於中碳鋼之黑化處理、銅及銅合金之光輝退火。

#### APPLICATIONS:

- ① Continuous blackening tempering treating to metal parts (Treating temperature must be above 450℃)
- ② Rich is deoxidation gas, weak decarbonization, little carbon lost, suitable for low/middle carbon's bright quenching, annealing, welding, etc.
- ③ Lean is oxidation gas, strong decarbonization, no carbon lost, suitable for middle carbon's blackening treating and bright annealing for copper and alloy metal.

## SY-814 連續式黑化處理爐

### CONTINUOUS BLACKENING TREATING FURNACE

型式 Model	產能 Treating Capacity (Kg/hr)	網寬 Conveyer Width (m/m)	爐內高度 Inside Height (m/m)	加熱長度 Length of Heating Section (m/m)	入口長度 Inlet Length (m/m)	DX流量 Flow (m <sup>3</sup> /hr)	電力 Power (kw)
SY-814-1	750-850	1000	100	7000	2200	60	145
SY-814-2	950-1050	1000	100	9000	2200	80	189
SY-814-3	1150-1250	1000	100	11000	2200	80	252
SY-814-4	2100-2400	1400	100	13000	2200	120	360

#### 用途:

金屬零件連續黑化回火處理(處理溫度400℃以上)。

#### 特點:

使用黑化處理爐能得到良好的黑化效果，顏色一致，防銹效果良好，經鹽霧試驗，其效果比一般染黑防銹效果更佳，亦可避免環保污染。

#### APPLICATIONS:

Continuous blackening tempering treating to metal parts (Treating temperature must be above 400℃)

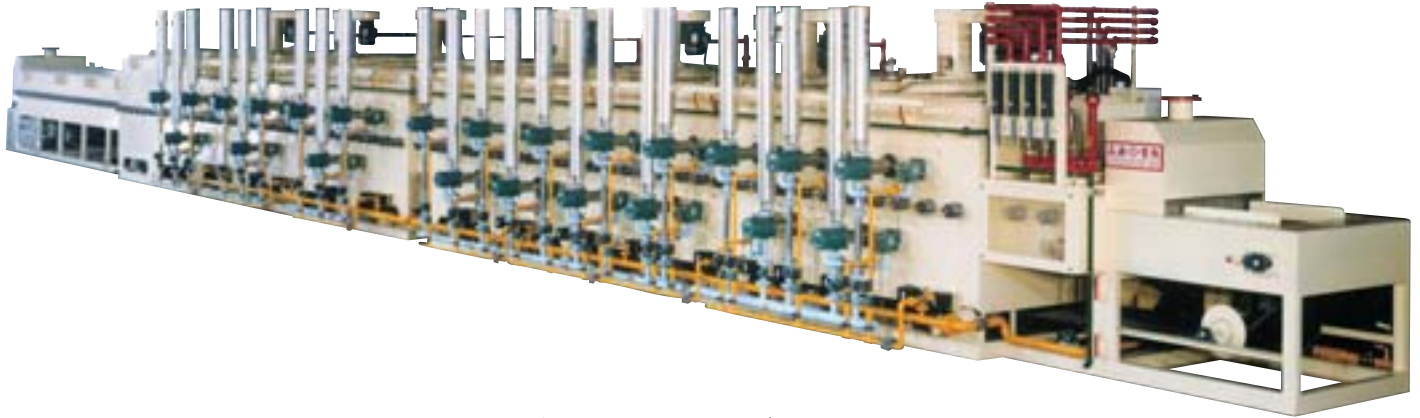
#### FEATURES:

Better blackening effects can be achieved with uniform color and good rust-resistance. Salt-testing proves that it has better anti-rusting effect than general blackening effect and can avoid the pollution.

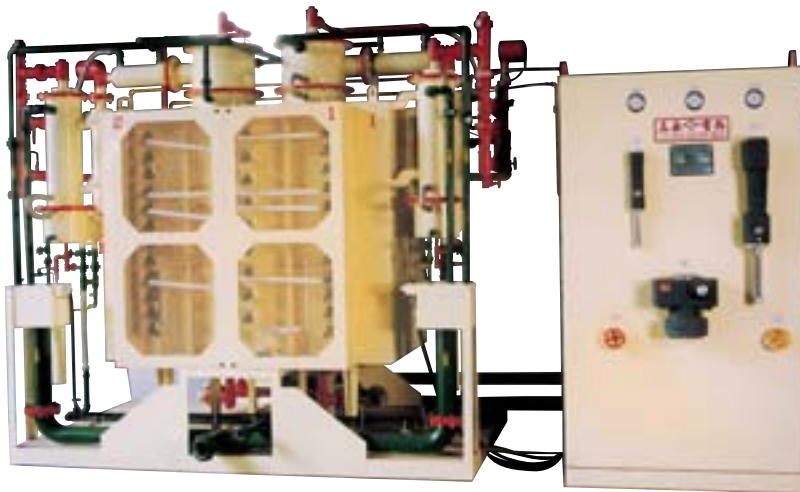


# SAN YUNG ELECTRIC HEAT TREATING FURNACE

**SY-816** 連續式熱風無氧化光輝退火(球化)爐  
**CONTINUOUS HOT BLAST NONE-OXIDATION ANNEALING FURNACE (GAS BURNER HEATING TYPE)**



**SY-817** 吸熱型瓦斯變成爐(RX發生機)  
**ENDOTHERMIC TYPE GAS GENERATOR (RX GAS)**



**SY-818** 電腦介面控制系統  
**THE COMPUTER INTERFACE CONTROL SYSTEM**



● 用途:

腳踏車、汽機車、手工具五金零件、鍛造品無氧化退火處理。

● 特點:

- ① 使用瓦斯加熱，并使用U型管及復熱器提高能源使用效率，并且升溫快速。
- ② 爐內使用RX氣體保護，并且採用攪拌風扇使溫度及氣氛均勻，產品光輝性良好。

APPLICATIONS:

Non-oxidation annealing treating to bicycle, car, motorcycle, hand tool hardware small parts, etc.

FEATURES:

- ① Use the gas burner heating and use U type radiant tube with recuperator can raise the efficiency for saving energy resources, also the raise temperature is quickly.
- ② Use the RX gas to protect in furnace, and use the mixed fan make the temperature and atmosphere uniform, the brightness of production is excellent.

型式 model	網寬 conveyer width (m/m)	高度 Height (m/m)	總長度 Total length (m/m)	最高溫度 Top Temperature ( °C )	電力 power ( kw )
<b>SY-816</b>	800	100	26450	900	118

**SY-819 連續式熱風無氧化光輝退火爐**  
**CONTINUOUS HOT BLAST NON-OXIDATION ANNEALING**  
**BRIGHT ANNEALING FURNACE**



**SY-820 發熱型瓦斯變成爐(DX 發生機)**  
**HEATING TYPE GAS GENERATOR**  
**(DX GAS)**



**SY-821 溫度自動控制盤**  
**AUTOMATIC TEMPERATURE CONTROL PANEL**



● **用途：**  
 矽鋼片應力消除、電子零件、五金零件退火處理。

**APPLICATIONS:**  
 Annealing treating to si steel chip stress relieving, electronic parts, hardware parts.

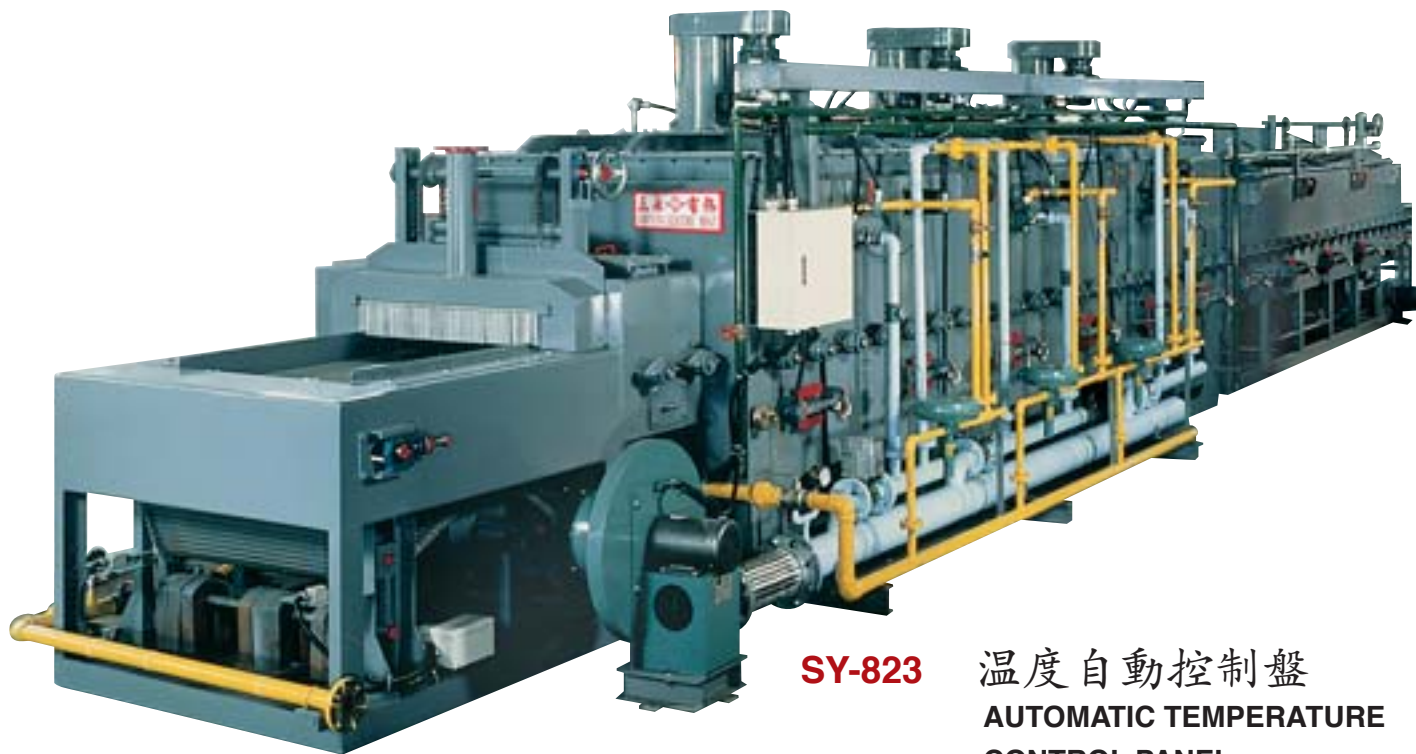
- **特點：**
- ① 溫度控制使用PID自動調節，并裝設熱風馬達，使爐內溫度均勻；
  - ② 使用DX氣體保護，產品光輝性良好；
  - ③ 使用電力加熱方式。

- FEATURES:**
- ① Temperature control use the PID automatic adjustment, and have mixed fan, so the temperature is uniform in the furnace.
  - ② Use the DX gas to protect, so the brightness of products is good.
  - ③ Use the electricity heating.

型式 model	網寬 conveyer width (m/m)	高度 Height (m/m)	總長度 Total length (m/m)	最高溫度 Top Temperature (℃)	電力 power (kw)	產能 Productivity (Kg/hr)
<b>SY-819-1</b>	400	100	18000	920	100	150
<b>SY-819-2</b>	600	100	23000	920	250	350
<b>SY-819-3</b>	800	100	23000	920	300	500
<b>SY-819-4</b>	800	100	28200	920	350	670
<b>SY-819-5</b>	800	100	32000	920	450	850
<b>SY-819-6</b>	1000	100	32000	920	525	1070

# SAN YUNG ELECTRIC HEAT TREATING FURNACE

**SY-822 連續式熱風退火(球化)爐 (瓦斯加熱·電氣加熱并用型)**  
**CONTINUOUS HOT BLAST ANNEALING (SPHEROIDIZING) FURNACE**  
**(A MODEL COMBINING GAS HEATING AND ELECTRICAL HEATING)**



**SY-823 溫度自動控制盤**  
**AUTOMATIC TEMPERATURE CONTROL PANEL**



● **用途:**

五金零件、手工具、汽機車、腳踏車零件，鍛造品退火處理。

● **特點:**

- ① 使用瓦斯加熱升溫快速;
- ② 爐內設有攪拌風扇，使爐內溫度均勻。

**APPLICATIONS:**

Annealing treating to hardware parts, hand tool, car, motorcycle, bicycle parts, forging products.

**FEATURES:**

- ① Use the gas burner to heating , raise the temperature is quickly.
- ② Furnace has mixed fan, it can use the temperature uniform.

型式 model	網寬 conveyer width (m/m)	高度 Height (m/m)	總長度 Total length (m/m)	最高溫度 Top Temperature (℃)	電力 power (kw)
<b>SY-822</b>	900	200	16200	900	20



**SY-824 連續式耐腐蝕表面處理爐 (耐煉)**  
**CONTINUOUS CORROSION RESISTANCE OF SURFACE TREATMENT FURNACE (KYLAN)**



**SY-825 溫度自動控制盤**  
**AUTOMATIC TEMPERATURE CONTROL PANEL**



- **用途:**
  - ① 汽車零件：螺絲、沖壓件、鑄件、管狀物、華司等。
  - ② 土木建築：高張力螺絲、鷹架金屬、鉸鏈、水塔周邊零件及鋼骨結構、橋梁結構之零組件。
  - ③ 家用電器：洗衣機、冰箱、冷氣機、電視天線等零件。
  - ④ 其它如船艦、電信設備、電力設備、鐵路器材、管接頭、彈簧、國防軍用品等零組件。
- **特點:**
  - ① 采用瓦斯加熱方式；
  - ② 使用熱風循環方式，溫度均勻穩定，能使藥劑充分結合於處理物表面，增加工件之耐腐蝕能力。

**APPLICATIONS:**

- ① Car accessories & parts: fasteners, stamping items, casting items, tube & pipe, washers, etc.
- ② Construction projects: high-tensile bolts, scaffold metal, chains, water tower related accessories and structural parts, of bridges.
- ③ Household appliances: accessories and parts of washing machine, refrigerator, air conditioner and antenna of television.
- ④ Other accessories and parts of ships and vessels, telecommunication facilities electrical facilities, railroad equipments, connectors, springs and military equipment.

**FEATURES:**

- ① Use gas burner heating.
- ② Use the hot blast recycle, the temperature is uniform, it can use the chemical combine with the surface of production, addition the corrosion resistance ability of work piece.

型式 model	網寬 conveyer width (m/m)	高度 Height (m/m)	總長度 Total length (m/m)	最高溫度 Top Temperature ( °C )	電力 power (kw)
<b>SY-824</b>	1000	300	28000	400	20

# SAN YUNG ELECTRIC HEAT TREATING FURNACE

## SY-826 連續式光輝爐 (熱處理、退火、硬焊、燒結) CONTINUOUS BRIGHT FURNACE (HEATING TREATMENT, ANNEALING, BRAZING & SINTERING)



## SY-827 溫度自動控制盤 AUTOMATIC TEMPERATURE CONTROL PANEL



## SY-828 氨氣分解爐 AMONIA DECOMPOSING FURNACE



### ● 用途:

連續式光輝爐可做各種精密零件 (銅、銀) 硬焊及不銹鋼 (片、綫、管) 之熱處理, 固溶化處理粉末冶金燒結以及金屬零件之光輝退火等處理。

### APPLICATIONS:

Continuous Bright Furnace can do brazing to precision parts (copper, silver) and heat treating to stainless steel (Piece, wire, tube), solid melting treating, powder metallurgic, sintering, and bright annealing treatment to metals, etc.

## 氨氣分解爐 AMONIA DECOMPOSING FURNACE

型式 Model	爐外尺寸: 寬×高×長 Outside Dimension Width×Height×Length (m/m)	氣體發生量 Gas Producing Capacity (M <sup>3</sup> /hr)	最高溫度 Top Temperature (℃)	使用電力 Power (kw)
SY-828-10	1220 × 2600 × 1800	5~10	950	10
SY-828-20	1220 × 2600 × 1800	10~15	950	20
SY-828-30	1530 × 2750 × 2200	20~25	950	30

## 連續式光輝熱處理退火(走銅)硬焊燒結爐

### CONTINUOUS BRIGHT HEATING TREATMENT FURNACE OF ANNEALING, COPPERING, BRAZING & SINTERING

型式 Model	隧道口徑: 寬×高 Tunnel Caliber Width×Height (m/m)	加熱長度 Heating Length (m/m)	冷卻長度 Cooling Length (m/m)	入口長度 Inlet Length (m/m)	出口長度 Outlet Length (m/m)	總長度 Total Length (m/m)	最高溫度 Top Temperature (℃)	使用電力 Power (kw)
SY-826-14	140 × 80	2500	4000	1500	2000	10000	1100	55
SY-826-25	250 × 120	3000	5000	1500	2000	11500	1100	81
SY-826-45	450 × 70	4000	6000	1500	2000	13500	1100	180

## 連續式光輝熱處理退火燒焯爐 (不銹鋼綫光輝退火爐)

### CONTINUOUS BRIGHT HEATING TREATMENT FURNACE OF ANNEALING & OBTUSE-BURNING (STAINLESS STEEL WIRE BRIGHT ANNEALING FURNACE)

型式 Model	寬×高 Width×Height (m/m)	加熱長度 Heating Length (m/m)	冷卻長度 Cooling Length (m/m)	總長度 Total Length (m/m)	最高溫度 Top Temperature (℃)	使用電力 Power (kw)	綫徑 Wire Diameter 2m/m-5m/m (條) (pc.)	月產量 24小時×26天 Monthly Treating Capacity (24 Hours Each Day×26 Working Days)
SY-826-50	500×100	8000	6000	14000	1150	112	12	80\$
SY-826-65	650×100	8000	6000	14000	1150	150	16	110\$
SY-826-80	800×100	8000	6000	14000	1150	200	20	135\$



# 三永電熱處理爐

**SY-829**

坩堝滴注式氣體滲碳爐

CRUCIBLE DRIPPING

GAS CARBURIZING FURNACE



**SY-830**

淬火冷却油槽

QUENCHING COOLING OIL

TANK



**SY-831**

脫脂洗淨槽

DEGREASING & WASHING

TANK



**SY-832**

坩堝熱風回火爐

CRUCIBLE HOT BLAST

TEMPERING FURNACE



**SY-833**

甲醇、甲苯儲藥槽

METHANOL & TOLUENE

STORAGE TANK



**SY-834**

整套溫度自動控制盤

WHOLE-SET AUTOMATIC

TEMPERATURE CONTROL

PANEL





# SAN YUNG ELECTRIC HEAT TREATING FURNACE

## 坩堝滴注式氣體滲碳爐

### CRUCIBLE DRIPPING GAS CARBURIZING FURNACE

● 使用保護氣體:

甲醇、甲苯

● 用途:

汽機車、自行車、齒輪、手工具、金屬零件等滲碳調質處理。

● 特點:

- ① 適用於多樣少量及長尺寸之滲碳調質處理;
- ② 採用精密儀表控制及設有處理流程指示處理中的狀況。

GASES USED:

Methanol, Toluene

APPLICATIONS:

Suitable for carburizing and hardening treatment to parts of cars/motorcycles/bicycles, gears, handtools, and metal parts, etc.

FEATURES:

- ① Suitable to be used in small quantity, versatile as well as long size carburizing and tempering treatment.
- ② With a sophisticated instrument and meter control and a processing alphascope to show the treating situation.

## 坩堝滴注式氣體滲碳爐

### CRUCIBLE DRIPPING GAS CARBURIZING FURNACE

型式 Model	本爐外部直徑 × 高度 Outside Diameter × Height (m/m)	保護坩堝直徑 × 高度 Protective Crucible Diameter × Height(m/m)	物料架直徑 × 高度 Stuff Support: Diameter × Height(m/m)	使用電力 Power (kw)
<b>SY-829-1</b>	∅ 1430 × 1450	∅ 500 × 1200	∅ 350 × 600	35
<b>SY-829-2</b>	∅ 1530 × 1750	∅ 600 × 1500	∅ 450 × 900	65
<b>SY-829-3</b>	∅ 1880 × 2050	∅ 750 × 1800	∅ 600 × 1200	90

## 淬火冷卻油槽

### QUENCHING COOLING OIL TANK

型式 Model	油槽總長度 × 高度 Oil Tank Total Length × Width(m/m)	圓徑 Diameter (m/m)	內室直徑 × 高度 InnerDiameter × Height (m/m)	油槽容量 Oil Tank Content ( L )	使用電力 Power (kw)
<b>SY-830-1</b>	2400 × 1950	1440	∅ 700 × 950	3200	10
<b>SY-830-2</b>	2650 × 2440	1840	∅ 970 × 1200	5200	10
<b>SY-830-3</b>	2650 × 2440	1840	∅ 970 × 1200	5200	10

## 脫脂洗淨槽

### DEGREASING & WASHING TANK

型式 Model	洗淨槽外部直徑 × 高度 Washing Tank Outside Diameter × Height(m/m)	內室直徑 × 高度 Inner Diameter × Height(m/m)	使用電力 Power (kw)
<b>SY-831-1</b>	∅ 800 × 1000	∅ 500 × 800	15
<b>SY-831-2</b>	∅ 1000 × 1220	∅ 600 × 1100	15
<b>SY-831-3</b>	∅ 1000 × 1530	∅ 750 × 1400	15

## 坩堝熱風回火爐

### CRUCIBLE HOT BLAST TEMPERING FURNACE

型式 Model	回火爐外部直徑 × 高度 Outside Diameter × Height(m/m)	內室直徑 × 高度 Inner Diameter × Height(m/m)	使用電力 Power (kw)
<b>SY-832-1</b>	∅ 1330 × 1220	∅ 540 × 850	20
<b>SY-832-2</b>	∅ 1430 × 1530	∅ 640 × 1150	30
<b>SY-832-3</b>	∅ 1580 × 1830	∅ 790 × 1450	55





# 三永電熱處理爐

**SY-835** 坩堝式退火(球化)爐  
CRUCIBLE TYPE ANNEALING  
(SPHEROIDIZING) FURNACE



**SY-835A** 坩堝式退火(球化)爐  
CRUCIBLE TYPE ANNEALING  
(SPHEROIDIZING) FURNACE



**SY-836** 溫度自動控制盤  
AUTOMATIC TEMPERATURE CONTROL PANEL



**SY-836A** O<sub>2</sub> 控制系統  
O<sub>2</sub> CONTROL SYSTEM



**SY-836B** 氣體分析儀(O<sub>2</sub>/CO/CO<sub>2</sub>)  
GAS ANALYZER(O<sub>2</sub>/CO/CO<sub>2</sub>)



# SAN YUNG ELECTRIC HEAT TREATING FURNACE

## SY-835B

坩堝式退火(球化)爐 < 瓦斯加熱 >  
CRUCIBLE TYPE ANNEALING (SPHEROIDIZING)  
FURNACE < GAS BURNER HEATING TYPE >



## SY-837

鐘罩式退火(球化)爐 < 瓦斯加熱 >  
BELL TYPE ANNEALING (SPHEROIDIZING)  
FURNACE < GAS BURNER HEATING TYPE >



## SY-836C

電腦程式控制系統  
COMPUTER PROGRAM  
CONTROL SYSTEM



## SY-836D

甲醇裂解爐  
METHANOL DECOMP-  
OSING FURNACE



## SY-836E

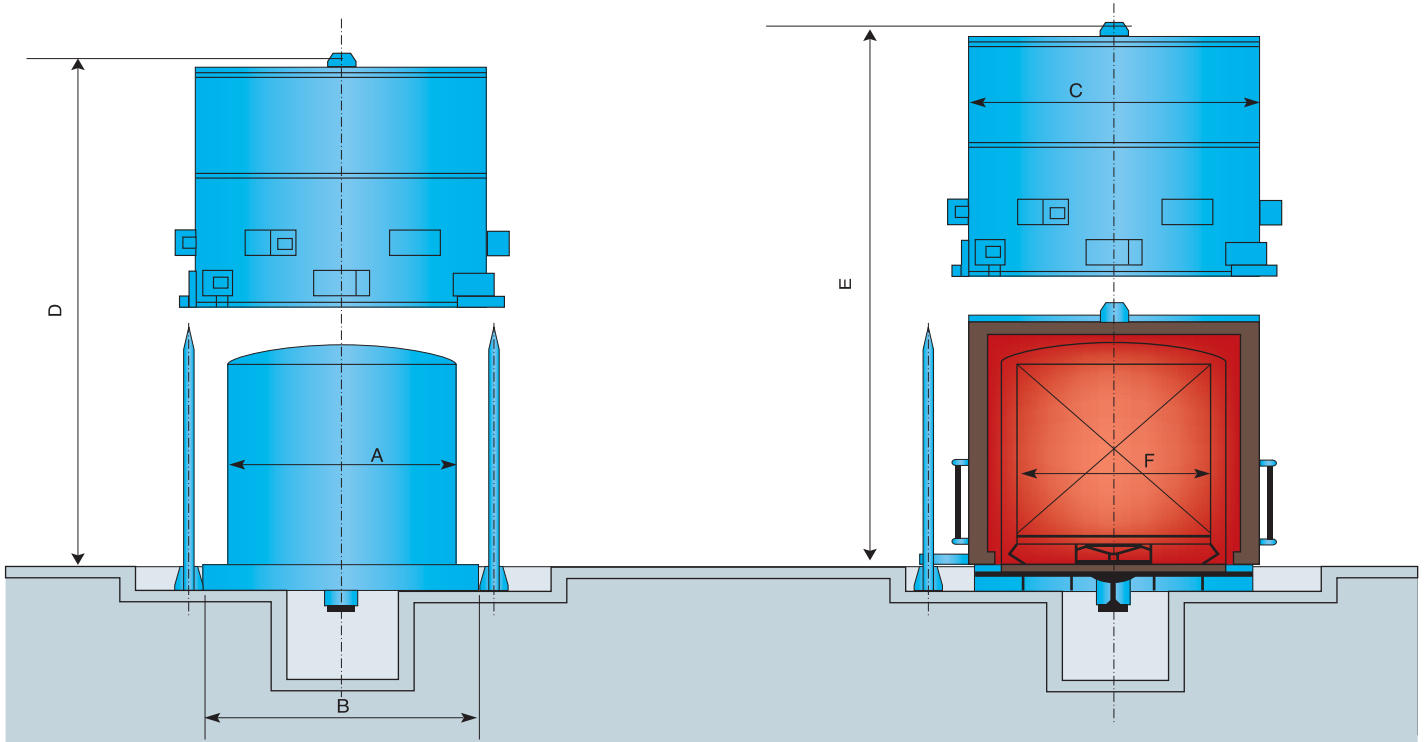
甲醇儲存槽  
METHANOL STORAGE  
TANK







# 三永電熱處理爐



# SAN YUNG ELECTRIC HEAT TREATING FURNACE

## SY-835(A) 坩堝式退火(球化)爐

### CRUCIBLE TYPE ANNEALING (SPHEROIDIZING) FURNACE

#### ● 用途:

中、低碳鋼線材，球狀化退火及光輝燒鈍，鋼帶束退火，銅及輕合金熱處理。

#### ● 特點:

採用 O<sub>2</sub> 控制系統，自動控制碳濃度，配合溫度程式控制系統，自動導入保護氣，節省人力。

#### ● 使用溫度:

200℃~850℃

#### ● 使用氣體:

氮氣 + 丙烯 (或 + 甲醇裂解氣)

#### APPLICATIONS:

Spheroidizing annealing & bright annealing for middle/low carbon wire material, annealing for steel belt, and heat treating for copper & light alloy metal.

#### FEATURES:

Adopt O<sub>2</sub> control system to automatically control carbon potential working with temperature program control system, it can lead in protective gas automatically, labor force is saved.

#### TEMPERATURE RANGE:

200℃~850℃

#### GASES USED:

Nitrogen + Propylene (or+Methanol decomposing gas)

型式 Model	本爐外部直徑×高度 Furnace outer Dia×Height (m/m)	保護桶尺寸 Protective Tank Size (m/m)	有效尺寸 Effective Dimension (m/m)	產能(爐) Output (Furnace) (kg)	使用電力 Power (kw)
<b>SY-835(A)-1</b>	∅ 3474×2610	2750×2300	2600×1800	5000~6000	324
<b>SY-835(A)-2</b>	∅ 3474×3410	2750×3210	2600×2600	7000~9000	365
<b>SY-835(A)-3</b>	∅ 4074×3266	3350×2910	3150×2200	12000~14000	414
<b>SY-835(A)-4</b>	∅ 4924×3750	4000×2925	3500×2700	18000~20000	772
<b>SY-835(A)-5</b>	∅ 5424×4550	4500×3725	4000×3500	27000~30000	800

\*產能:計算方式以線材規格的外徑 800mm 下去評估.\*尺寸規格可接受訂制。  
Capacity: Calculated by Coil size O.D. 800mm of material. Size & Specification can be custom made.

## SY-835B 坩堝式退火(球化)爐 < 瓦斯加熱 >

### CRUCIBLE TYPE ANNEALING (SPHEROIDIZING) FURNACE < GAS BURNER HEATING TYPE >

## SY-837 鐘罩式退火(球化)爐 < 瓦斯加熱 >

### BELL TYPE ANNEALING (SPHEROIDIZING) FURNACE < GAS BURNER HEATING TYPE >

#### ● 用途:

中、低碳鋼線材，球狀化退火及光輝燒鈍，鋼帶束退火，銅及輕合金熱處理。

#### ● 特點:

- ① 強力的大型攪拌風扇，高對流循環系統，縮短升溫時間同時物料溫度均勻，於退火過程中可得到均一的產品。
- ② 採用高性能之瓦斯燃燒機，並有自動點火系統及安全檢知系統，確保作業安全。
- ③ 採用 O<sub>2</sub> 控制系統，自動控制碳濃度，配合溫度程式控制系統，自動導入保護氣，節省人力。

#### APPLICATIONS:

Spheroidizing annealing & bright annealing for middle/low carbon wire material, annealing for steel belt, and heat treating for copper & light alloy metal.

#### FEATURES:

- ① Heavy duty big agitating fan, high convection current circulation system to shorten the time to rise temperature and to make material's temperature uniform so that uniform quality can be made during the annealing procedure.
- ② Adopt high-performance gas burner. It also equipped with auto-ignition system and safety inspection system to ensure operation safety.
- ③ Adopt O<sub>2</sub> control system to automatically control carbon potential working with temperature program control system, it can lead in protective gas automatically. Labor force is saved.

型式 Model	爐外尺寸 Outside Dimension (m/m)	保護桶尺寸 Protective Tank Size (m/m)	有效尺寸 Effective Dimension (m/m)	產能(爐) Output (Furnace) (kg)	燃燒能力 Combustion Ability (kcal/hr)
<b>SY-835B-4</b>	∅5028×3750	∅4000×2925	∅3500×2700	18000-20000	800000
<b>SY-835B-5</b>	∅5528×4550	∅4500×3725	∅4000×3500	26000-30000	1000000

型式 Model	爐外尺寸 Outside Dimension (m/m)	保護內罩尺寸 Protective Inside Cover Dimension(m/m)	有效尺寸 Effective Dimension (m/m)	產能(爐) Output (Furnace) (kg)	燃燒能力 Combustion Ability (kcal/hr)
<b>SY-837-1</b>	∅3280×H3620	∅2100×H3070	∅1900×H2100	3000	280000
<b>SY-837-2</b>	∅4380×H4920	∅3200×H4370	∅3000×H3400	13500	840000

\*產能:計算方式以線材規格外徑 1250mm × 高度 1000mm, 重量 1.5Tons.  
\*加熱方式也可採用電熱方式設計、尺寸規格可接受訂制。  
Capacity: Calculated by Coil size O.D. 1250mm × Height 1000mm, Weight 1.5 Tons.  
Heating type can also adopt electric heating, size & specification can be custom made.



## SY-838 箱式球化退火爐

### CHAMBER TYPE SPHEROIDIZING ANNEALING FURNACE

#### ● 用途：

高、中、低碳鋼，中低碳合金鋼綫材、棒材、管材、鑄鍛件之球化退火，軟化退火處理，亦可設計通用於回火及正常化處理。

#### ● 特點：

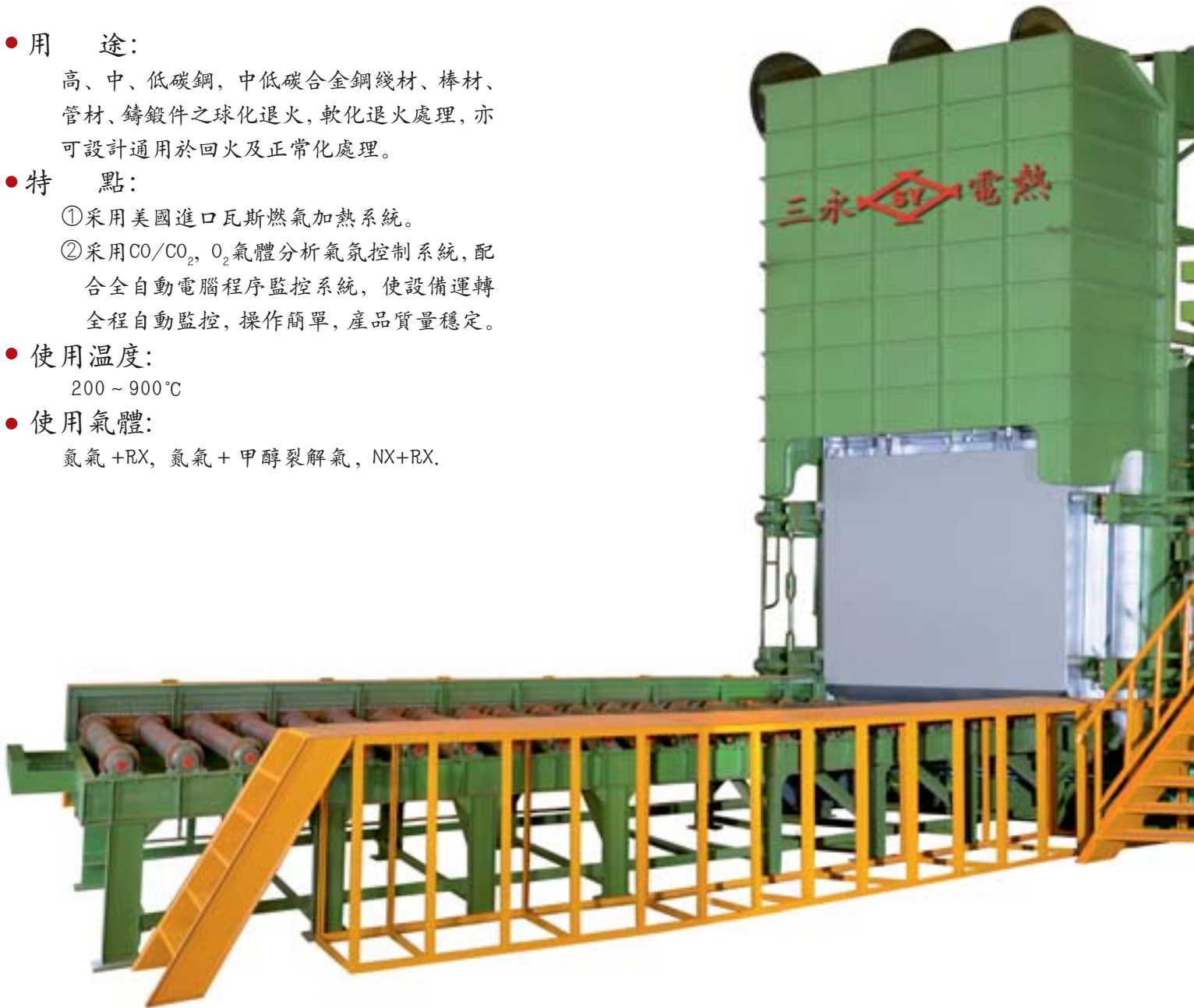
- ① 採用美國進口瓦斯燃氣加熱系統。
- ② 採用CO/CO<sub>2</sub>, O<sub>2</sub>氣體分析氣氛控制系統，配合全自動電腦程序監控系統，使設備運轉全程自動監控，操作簡單，產品質量穩定。

#### ● 使用溫度：

200 ~ 900°C

#### ● 使用氣體：

氮氣+RX, 氮氣+甲醇裂解氣, NX+RX.



型式 Model	爐體外部尺寸 Outside dimension m/m			有效尺寸 Effective dimension m/m			總長度 Total length m/m	產能(A) Output(A) kg	產能(B) Output(B) kg
	長 Length	寬 Width	高 Height	長 Length	寬 Width	高 Height			
<b>SY-838-1A/B</b>	9100	3000	4735	7200	1800	2400	25500	16000	32000
<b>SY-838-2A/B</b>	10900	3000	4735	9000	1800	2400	30900	20000	40000
<b>SY-838-3A/B</b>	12700	3000	4735	10800	1800	2400	36300	24000	48000
<b>SY-838-4A/B</b>	14500	3000	4735	12600	1800	2400	41700	28000	60000

\* 產能(A)計算方式以綫材規格的外徑 800mm 以上評估；產能(B)計算方式以綫材規格的外徑 800mm 以下評估。  
Output(A): calculated by Coil size O.D.above 800mm; Output(B): calculated by Coil size O.D.below 800mm



# SAN YUNG ELECTRIC HEAT TREATING FURNACE

## APPLICATIONS:

spheroidizing annealing & soften annealing for high/middle/low carbon steel, middle/low carbon alloy steel wire material, stick, tube and forging material, and also can be designed for tempering and normalizing treatment.

## FEATURES:

- ① Adopts U.S.A gas combustion system.
- ② Adopts CO/CO<sub>2</sub>, O<sub>2</sub> gas analyzing atmosphere control system, operates in coordination with automatic computer program system which monitoring the whole operation, easy to operate and stable product quality.

## TEMPERATURE RANGE:

200~900℃.

## GASES USED:

Nitrogen + RX, Nitrogen + Methanol decomposing gas , NX+RX.



## SY-839 温度自动控制盤

### AUTOMATIC TEMPERATURE CONTROL PANEL



## SY-840 臺車式鋁合金T4熱處理爐 CAR-TYPE ALUMINUM ALLOY T4 HEAT TREATMENT FURNACE

● 用途:

鋁合金自行車架，零組件T4固溶化等處理。

● 特點:

- ① 採用美制瓦斯燃燒及控制系統，熱效率高，安全性佳。
- ② 可程式溫度控制系統，並有超高溫警報及切斷控制系統。

● 使用溫度:

50℃~650℃

APPLICATIONS:

Aluminum alloy bike frame, accessories, components T4 melting process, etc. treatment.

FEATURES:

- ① Adopts USA gas burner and control system with high performance and excellent safety.
- ② Programmable temperature control system with overheated alarm and cut-off control system.

TEMPERATURE RANGE:

50℃~650℃



## SY-841 溫度自動控制盤 AUTOMATIC TEMPERATURE CONTROL PANEL



型式 Model	產能/爐 Productivity /Furnace	物料架規格(m/m) Dimension of Stuff Support 長L×寬W×高H×組Set	使用電力 Power kw
SY-840	車架200臺 frame 200 sets	1960×1960×640×4	30

## SY-842 臺車式鋁合金T6時效處理爐

### ELECTRIC CAR TYPE ALUMINUM ALLOY T6 AGE TREATMENT FURNACE

● 用途:

鋁合金自行車架，零組件T6等時效及回火處理。

● 特點:①採用美制瓦斯燃燒及控制系統，熱效率高，安全性佳。

②可程式溫度控制系統，并有超高溫警報及切斷控制系統。

● 使用溫度:

50℃~350℃

APPLICATIONS:

Aluminum alloy bike frame, accessories, components T6, etc. age and tempering treatment.

FEATURES:

- ① Adopts USA gas burning and control system with high performance and excellent safety.
- ② Programmable temperature control system with overheated alarm and cut-off control system.

TEMPERATURE RANGE:

50℃~350℃



## SY-843 溫度自動控制盤

### AUTOMATIC TEMPERATURE CONTROL PANEL



型式 Model	產能/爐 Productivity /Furnace	物料架規格 (m/m) Dimension of Stuff Support 長L×寬W×高H×組Set	使用電力 Power (kw)
SY-842	車架600臺 frame 600 sets	3200×1600×610×9	10



## SY-844 坩堝式鋁合金T4熱處理爐

### CRUCIBLE ALUMINUM ALLOY T4 HEAT TREATMENT FURNACE



● 用途:

鋁合金花鼓，小零件T4等固溶化處理。

● 特點:①採用電氣加熱。

②採用熱風循環方式，溫度均勻穩定。

● 使用溫度:

50℃~650℃

APPLICATIONS:

Aluminum alloy spoke, drum, and small parts T4, etc. melting process.

FEATURES:

- ① Adopts of electric heating.
- ② Uses hot air circulation type to have uniform and stable temperature.

TEMPERATURE RANGE:

50℃~650℃

## SY-845

### 溫度自動控制盤

#### AUTOMATIC TEMPERATURE CONTROL PANEL



型式 Model	產能/爐 Productivity /Furnace	導風板尺寸(m/m) Size of air guide board 直徑Diameter×深度Depth	使用電力 Power (kw)
SY-844	420Kg	1500×2050	100

# SAN YUNG ELECTRIC HEAT TREATING FURNACE

## SY-ZQ 真空清洗機 & SY-ZA 溫度自動控制盤

VACUUM DEGREASING & WASHING MACHINE & AUTOMATIC TEMPERATURE CONTROL PANEL



### ● 用途:

各種金屬零件在熱處理前後以及裝備前的清洗。

### ● 特點:

- ① 採用封閉結構去污脫脂減少排放;
- ② 真空清洗具有更好的清洗效果;
- ③ 真空乾燥節約能源。

### APPLICATIONS:

For washing all sorts of metal parts before/after heating treatment and before installation.

### FEATURES:

- ① Adopts sealed structure for degreasing results in less discharges.
- ② Vacuum washing results in cleaner effect.
- ③ Vacuum dry results in energy resources-saving.

型式 Model	有效工作區尺寸 Effective Dimension (m/m)			裝爐量 Productivity /Furnace kg	最高工作溫度 Top Temperature °C	極限真空度 Ultimate Vacuum Intensity Pa	加熱功率 Heating Power KW	清洗劑種類 Washing Liquid Medium
	寬 Width	長 Length	高 Height					
<b>SY-ZQ1</b>	600	1200	600	600	90	1 × 10 <sup>4</sup>	2 × 54	水介質 Water Medium
<b>SY-ZQ2</b>	600	1200	700	700	90	1 × 10 <sup>4</sup>	2 × 54	
<b>SY-ZQ3</b>	700	1200	700	800	90	1 × 10 <sup>4</sup>	2 × 54	
<b>SY-ZQ4</b>	760	1200	800	1000	90	1 × 10 <sup>4</sup>	2 × 54	



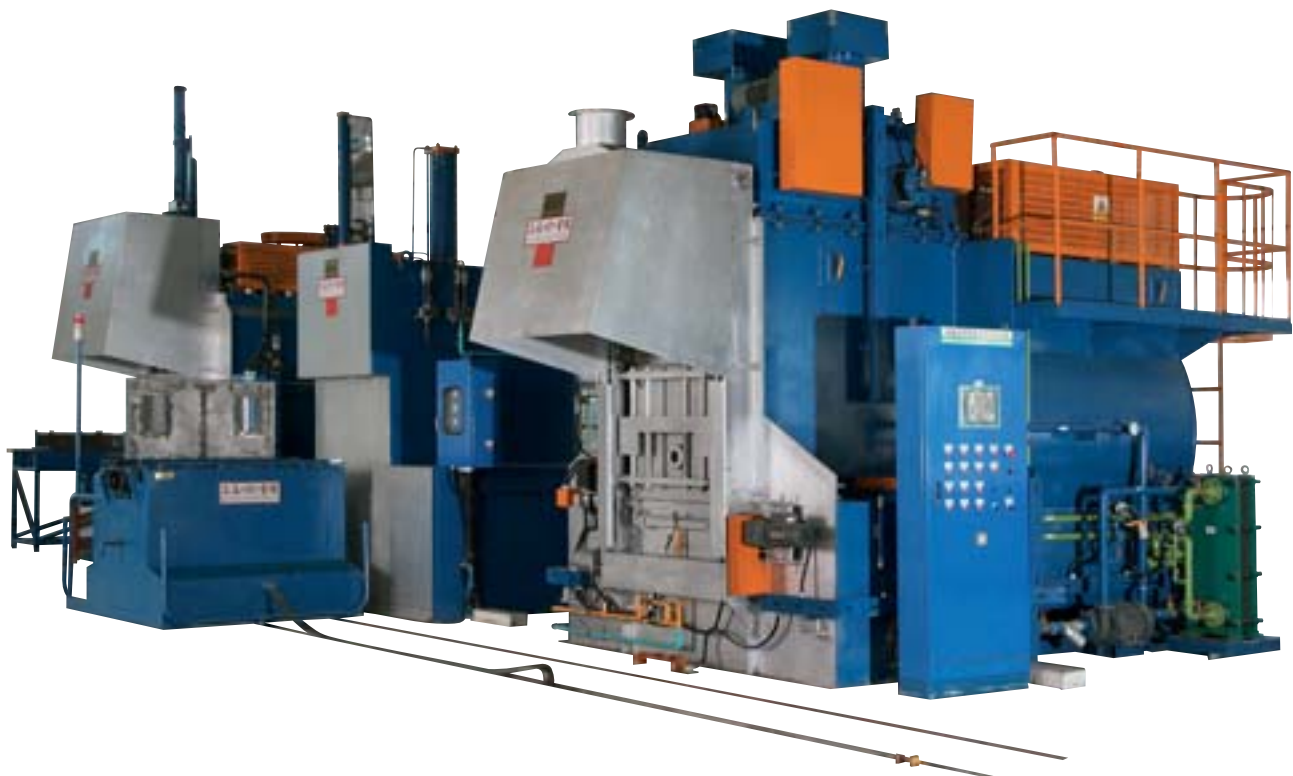
## SYD-ST 箱型多用爐

MULTI-PURPOSE CHAMBER FURNACE



## SYD-SJ 箱型多用爐

MULTI-PURPOSE CHAMBER FURNACE



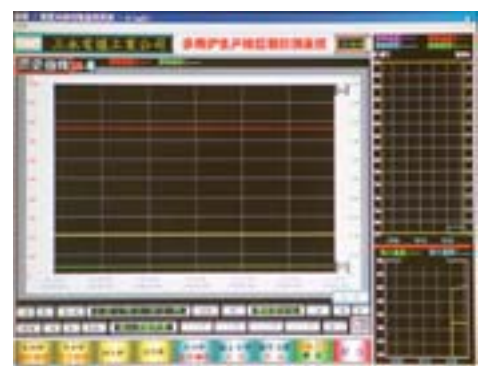
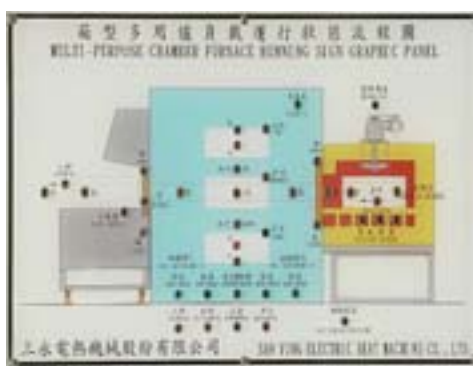


# SAN YUNG ELECTRIC HEAT TREATING FURNACE

## SYD-A 溫度自動控制盤 AUTOMATIC TEMPERATURE CONTROL PANEL



## SYD-B 電腦程式控制系統 COMPUTER PROGRAM CONTROL SYSTEM



型式 Model	有效爐膛尺寸 Effective Dimension (m/m)			最大裝爐量 MAX. Productivity /Furnace kg	加熱 功率 Heating Power KW	最高 使用溫度 Top Temperature °C	加熱能力 至850 °C Heating Ability To 850 °C kg/h	淬火油槽容量 Capacity of Quenching Oil Tank L	整體尺寸 Outside Dimension (m/m)		
	寬 Width	長 Length	高 Height						寬 Width	長 Length	高 Height
<b>SYD-ST(J)1</b>	600	1200	600	600	120	950	475	4800	2700	3900	4900
<b>SYD-ST(J)2</b>	600	1200	700	700	130	950	500	5600	2700	3900	5000
<b>SYD-ST(J)3</b>	700	1200	700	800	135	950	540	6200	2700	4600	5000
<b>SYD-ST(J)4</b>	760	1200	800	1000	144	950	565	6700	2900	4600	5100

\* 尺寸規格可接受訂制。Size & specification can be custom made.



## SYA-S 等溫淬火箱型爐 AUSTEMPERING CHAMBER FURNACE



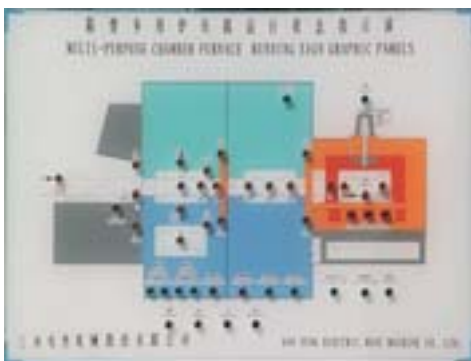
爐型 MODEL	特點 FEATURES	用途 APPLICATIONS
	<p>1. 結構緊湊、物料轉移平穩快捷。            2. 硝鹽浴槽容量大、溫度波動小。            3. 氮氣保護，安全可靠。            4. 陶瓷發熱體使用溫度高，壽命長。            5. 有硝鹽氣體和液體回收淨化系統，可實現無公害潔淨熱處理。            6. 硝鹽浴槽給水系統，可滿足不同零件的等溫淬火。            7. 爐溫採用智能化溫控表，爐內氣氛採用O<sub>2</sub>控制系統，爐子動作採用PLC（可編程式控制系統），自動化程度高，節省人力。</p> <p>1. Compact Structure , materials shift smoothly, steady and quickly.            2. Big nitrate tank capacity with little temperature fluctuation.            3. Safe and reliable nitrogen as protective gas.            4. Ceramics heater can be used in high temp. and last longer.            5. Nitrate gas and liquid recyclable purify system will be able to accomplish non-environmental pollution heating treatment.            6. Nitrate tank water supply system will be able to satisfy different spare part isothermal quenching.            7. Furnace temp. adopts intelligent temperature control panel; Inner furnace atmosphere adopts O<sub>2</sub> control system; Furnace motion adopts PLC (programmable control system), High automation and labor force is saved.</p>	<p>ADI材料的等溫淬火。合金結構鋼及合金工模具鋼的等溫淬火處理。</p> <p>ADI material isothermal quenching .Alloy structural steel and alloy mold steel isothermal quenching treatment.</p>

# SAN YUNG ELECTRIC HEAT TREATING FURNACE

## SYA-A 溫度自動控制盤 AUTOMATIC TEMPERATURE CONTROL PANEL



## SYA-B 電腦程式控制系統 COMPUTER PROGRAM CONTROL SYSTEM



型式 Model	有效爐膛尺寸 Effective Dimension (m/m)			最大裝爐量 MAX. Productivity /Furnace kg	加熱 功率 Heating Power KW	最高 使用溫度 Top Temperature °C	加熱能力 至850 °C Heating Ability To 850 °C kg/h	硝鹽槽容量 Capacity of Nitrate Tank L	整體尺寸 Outside Dimension (m/m)		
	寬 Width	長 Length	高 Height						寬 Width	長 Length	高 Height
<b>SYA-S1</b>	700	1100	600	600	120	950(1100)	475	6000	2500	6400	3900
<b>SYA-S2</b>	700	1200	700	800	132	950(1100)	540	8000	2700	6500	4000
<b>SYA-S3</b>	700	1200	800	1000	132	950(1100)	540	8000	2900	6500	4200
<b>SYA-S4</b>	900	1200	750	1200	144	950(1100)	565	10000	3100	6500	4400
<b>SYA-S5</b>	900	1200	900	1500	144	950(1100)	565	12000	3100	6500	4700





# 三永電熱處理爐

## SYZ-DQ 單室真空高壓氣體淬火爐 & SYZ-A 溫度自動控制箱 SINGLE CHAMBER VACUUM HIGH PRESSURE GAS QUENCHING FURNACE & AUTOMATIC TEMPERATURE CONTROL PANEL



### SYZ-DQ 單室真空高壓氣體淬火爐 SINGLE CHAMBER VACUUM HIGH PRESSURE GAS QUENCHING FURNACE

用途: 1. 合金鋼、高速鋼、高合金工模具鋼、不銹鋼等材料的高壓氣淬和回火處理, 2. 不銹鋼、鈦合金等材料的固溶、時效處理, 3. 磁性等材料的真空退火處理, 4. 真空釦焊處理。				APPLICATIONS: ◎ Alloy steel, high speed steel, high alloy mold steel, stainless steel, etc. high pressure gas quenching and tempering treatment. ◎ Stainless steel, titanium alloy, etc. solution and aging treatment. ◎ Magnetic material, etc. vacuum annealing treatment. ◎ Vacuum brazing treatment.					
型式 Model	加熱區尺寸 Heating Zone Dimension(m/m)			裝爐量 Capacity kg	最高溫度 Top Temperature °c	極限真空度 Ultimate Vacuum Intensity Pa	加熱功率 Heating Power KW	氣冷壓力 Gas Cooling Pressure Pa	壓升率 Pressure Rising Rate Pa/h
	寬 Width	長 Length	高 Height						
SYZ-DQ4	400	600	400	200	1320	1	80	6.0 × 10 <sup>5</sup>	6.7 × 10 <sup>-1</sup>
SYZ-DQ6	600	900	600	500	1320		120		

### SYZ-C 雙室真空油淬氣冷爐 DOUBLE CHAMBER VACUUM OIL QUENCHING GAS COOLING FURNACE

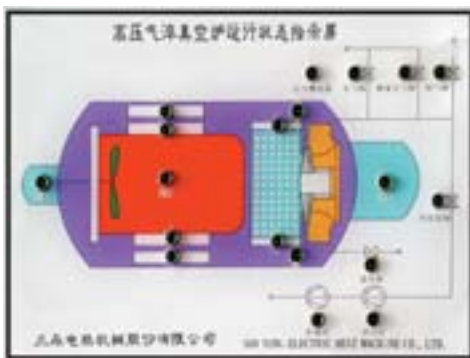
用途: 1. 合金鋼、高速鋼、工模具鋼、軸承鋼、彈性合金、不銹鋼等材料的光亮淬火或加壓氣淬處理, 2. 磁性材料的燒結和真空熱處理, 3. 金屬件的真空退火處理, 4. 真空釦焊處理。				APPLICATIONS: ◎ Alloy steel, high speed steel, mold steel, bearing steel, elastic alloy, stainless steel, etc. bright quenching or pressurize gas quenching treatment. ◎ Magnetic material sintering and vacuum heating treatment. ◎ Metals vacuum annealing treatment. ◎ Vacuum brazing treatment.					
型式 Model	加熱區尺寸 Heating Zone Dimension(m/m)			裝爐量 Capacity kg	最高溫度 Top Temperature °c	極限真空度 Ultimate Vacuum Intensity Pa	加熱功率 Heating Power KW	氣冷壓力 Gas Cooling Pressure Pa	壓升率 Pressure Rising Rate Pa/h
	寬 Width	長 Length	高 Height						
SYZ-C4	400	600	400	120	1320	2.0 × 10 <sup>-1</sup>	63	8.4 × 10 <sup>4</sup> ~	6.7 × 10 <sup>-1</sup>
SYZ-C6	600	900	450	210	1320	4.0 × 10 <sup>-3</sup>	100	2.0 × 10 <sup>5</sup>	

### SYZ-Q 雙室真空高壓氣體淬火爐 DOUBLE CHAMBER VACUUM HIGH PRESSURE GAS QUENCHING FURNACE

用途: 1. 合金鋼、高速鋼、高合金工模具鋼、不銹鋼等材料的高壓氣淬處理, 2. 不銹鋼、鈦合金等材料的固溶處理, 3. 磁性等材料的真空退火處理, 4. 真空釦焊處理。				APPLICATIONS: ◎ Alloy steel, high speed steel, high alloy mold steel, stainless steel, etc. high pressure gas quenching treatment. ◎ Stainless steel, titanium alloy, etc. solution treatment. ◎ Magnetic material, etc. vacuum annealing treatment. ◎ Vacuum brazing treatment.					
型式 Model	加熱區尺寸 Heating Zone Dimension(m/m)			裝爐量 Capacity kg	最高溫度 Top Temperature °c	極限真空度 Ultimate Vacuum Intensity Pa	加熱功率 Heating Power KW	氣冷壓力 Gas Cooling Pressure Pa	壓升率 Pressure Rising Rate Pa/h
	寬 Width	長 Length	高 Height						
SYZ-Q4	400	600	400	150	1320	1	80	6.0 × 10 <sup>5</sup>	6.7 × 10 <sup>-1</sup>
SYZ-Q6	600	900	450	300	1320		120		

# SAN YUNG ELECTRIC HEAT TREATING FURNACE

## SYZ-B 電腦程式控制系統 COMPUTER PROGRAM CONTROL SYSTEM



## SYZ-H 真空回火爐 VACUUM TEMPERING FURNACE

**用途:** 1. 合金鋼、高速鋼、工模鋼、軸承鋼、彈性合金、不銹鋼等材料的真空回火處理。2. 真空时效處理。3. 有色金屬的再結晶退火處理。

**APPLICATIONS:** ◎ Alloy steel, high speed steel, mold steel, bearing steel, elastic alloy, stainless steel, etc. vacuum tempering treatment. ◎ Vacuum aging treatment. ◎ Nonferrous metals recrystallization annealing treatment.

型式 Model	加熱區尺寸 Heating Zone Dimension(m/m)			裝爐量 Capacity kg	最高溫度 Top Temperature °C	極限真空度 Ultimate Vacuum Intensity Pa	加熱功率 Heating Power KW	氣冷壓力 Gas Cooling Pressure Pa	壓升率 Pressure Rising Rate Pa/h
	寬 Width	長 Length	高 Height						
SYZ-H4	400	600	400	200	750	4.0 × 10 <sup>-3</sup>	40	8.4 × 10 <sup>4</sup> ~	6.7 × 10 <sup>-1</sup>
SYZ-H6	600	900	600	500	750		80	2.0 × 10 <sup>5</sup>	

## SYZ-DS 單室真空燒結爐 SINGLE CHAMBER VACUUM SINTERING FURNACE

**用途:** 1. 硬質合金、不銹鋼、磁性材料等粉末冶金件的高溫燒結處理。2. 陶瓷材料的燒結處理。3. 金屬件的真空退火處理。4. 真空鉗焊處理。

**APPLICATIONS:** ◎ Hard alloy steel, stainless steel, magnetic material, etc. powder metallurgy product high temp. sintering treatment. ◎ Ceramic material sintering treatment. ◎ Metals vacuum annealing treatment. ◎ Vacuum brazing treatment.

型式 Model	加熱區尺寸 Heating Zone Dimension(m/m)			裝爐量 Capacity kg	最高溫度 Top Temperature °C	極限真空度 Ultimate Vacuum Intensity Pa	加熱功率 Heating Power KW	氣冷壓力 Gas Cooling Pressure Pa	壓升率 Pressure Rising Rate Pa/h
	寬 Width	長 Length	高 Height						
SYZ-DS4	400	600	400	200	1320	2.0 × 10 <sup>-1</sup>	80	8.4 × 10 <sup>4</sup> ~	6.7 × 10 <sup>-1</sup>
SYZ-DS6	600	900	600	500	1320	4.0 × 10 <sup>-3</sup>	140	2.0 × 10 <sup>5</sup>	

## SYZ-S 雙室真空燒結淬火爐 DOUBLE CHAMBER VACUUM SINTERING QUENCHING FURNACE

**用途:** 1. 硬質合金、不銹鋼、磁性材料等粉末冶金件的高溫燒結和燒結後的直接油淬處理。2. 合金鋼、高速鋼、工模鋼、軸承鋼、彈性合金、不銹鋼等材料的光亮淬火或加壓氣淬處理。3. 金屬件的真空退火處理。4. 真空鉗焊和鉗焊後的直接淬火處理。

**APPLICATIONS:** ◎ Hard alloy steel, stainless steel, magnetic material, etc. powder metallurgy product high temp. sintering and direct oil quenching after sintering treatment. ◎ Alloy steel, high speed steel, mold steel, bearing steel, elastic alloy, stainless steel, etc. bright quenching or pressurize gas quenching treatment. ◎ Metals vacuum annealing treatment. ◎ Vacuum brazing and direct quenching after vacuum brazing treatment.

型式 Model	加熱區尺寸 Heating Zone Dimension(m/m)			裝爐量 Capacity kg	最高溫度 Top Temperature °C	極限真空度 Ultimate Vacuum Intensity Pa	加熱功率 Heating Power KW	氣冷壓力 Gas Cooling Pressure Pa	壓升率 Pressure Rising Rate Pa/h
	寬 Width	長 Length	高 Height						
SYZ-S4	400	600	400	120	1600	2.0 × 10 <sup>-1</sup>	100	8.4 × 10 <sup>4</sup> ~	6.7 × 10 <sup>-1</sup>
SYZ-S6	600	900	450	210	1600	4.0 × 10 <sup>-3</sup>	140	2.0 × 10 <sup>5</sup>	

## SYZ-DQH 單室真空鉗焊爐 SINGLE CHAMBER VACUUM BRAZING FURNACE

**用途:** 1. 合金鋼、高速鋼、高合金工模鋼、磁性材料、有色金屬、不銹鋼等材料的真空鉗焊處理。2. 不銹鋼、鈦合金等材料的固溶、时效處理。3. 金屬件的真空退火處理。4. 磁性材料的燒結處理。

**APPLICATIONS:** ◎ Alloy steel, high speed steel, high alloy mold steel, magnetic material, nonferrous metals, stainless steel, etc. vacuum brazing treatment. ◎ Stainless steel, titanium alloy, etc. solution and aging treatment. ◎ Metals vacuum annealing treatment. ◎ Magnetic material sintering treatment.

型式 Model	加熱區尺寸 Heating Zone Dimension(m/m)			裝爐量 Capacity kg	最高溫度 Top Temperature °C	極限真空度 Ultimate Vacuum Intensity Pa	加熱功率 Heating Power KW	氣冷壓力 Gas Cooling Pressure Pa	壓升率 Pressure Rising Rate Pa/h
	寬 Width	長 Length	高 Height						
SYZ-DQH4	400	600	400	200	1320	2.0 × 10 <sup>-1</sup>	80	8.4 × 10 <sup>4</sup> ~	6.7 × 10 <sup>-1</sup>
SYZ-DQH6	600	900	600	500	1320	4.0 × 10 <sup>-3</sup>	140	2.0 × 10 <sup>5</sup>	

## SYZ-LQH 真空鋁鉗焊爐 VACUUM ALUMINUM BRAZING FURNACE

**用途:** 1. 鋁合金換熱器、鋁合金電子零件等鋁質材料的真空鉗焊處理。2. 真空时效處理。3. 有色金屬的再結晶退火處理。4. 金屬淬火件的回火處理。

**APPLICATIONS:** ◎ Aluminum alloy heat exchanger, aluminum alloy electronic parts, etc. vacuum brazing treatment. ◎ Vacuum aging treatment. ◎ Nonferrous metals recrystallization annealing treatment. ◎ Quenching metals tempering treatment.

型式 Model	加熱區尺寸 Heating Zone Dimension(m/m)			裝爐量 Capacity kg	最高溫度 Top Temperature °C	極限真空度 Ultimate Vacuum Intensity Pa	加熱功率 Heating Power KW	氣冷壓力 Gas Cooling Pressure Pa	壓升率 Pressure Rising Rate Pa/h
	寬 Width	長 Length	高 Height						
SYZ-LQH4	400	600	400	200	760	6.5 × 10 <sup>-4</sup>	100	8.4 × 10 <sup>4</sup> ~	6.7 × 10 <sup>-1</sup>
SYZ-LQH6	600	900	600	300	760		140	2.0 × 10 <sup>5</sup>	





# 三永電熱處理爐

辦公室  
Office



會議室  
Chamber



設計部  
Dept. of Design



CAD 輔助設計  
CAD Design



會議廳  
Conference lobby



員工休閒區 (高爾夫練習場, 網球場·釣魚池)  
Relaxation area ( Golf exercise arena, Tennis arena, Fishing Pond)





# SAN YUNG ELECTRIC HEAT TREATING FURNACE

## 金屬工業研究發展中心及熱處理協會蒞臨參觀

Metal Industries Research & Development Centre and Heat Treatment Association Visiting Our Factory.



## 日本昭和精機工程師進行輔導及技術交流

The engineer of Showa Precise Engineering Co., Ltd. Japan assisting and guiding and exchanging technology.



## 美國 ECLIPSE 工程師進行輔導及技術交流

USA ECLIPSE engineers assisting, guiding, and exchanging technology.





# 三永電熱處理爐

## 上海熱處理協會蒞臨參觀

Shanghai Heat Treatment Association visiting our factory.



## 設有專業熱處理技術培訓及技術研究開發廠房

Establishing professional heat treating technology training and technology R & D Plant.



## 品保檢驗室

Quality examination chamber





# SAN YUNG ELECTRIC HEAT TREATING FURNACE

## 機械組立

Machinery combination



## 控制盤配線

Control board distributing



## 發熱體制造

Heater manufacturing



## 外銷裝櫃

Loading container for export



## 外銷裝箱

Outer carton packing





# 熱處理爐

設計制造 · 整廠輸出



## 三永電熱機械股份有限公司

總公司：臺灣省彰化縣溪州鄉溪厝村興南路501號  
工廠  
電話：886-4-8896106~10  
傳真：886-4-8896098  
E-mail:TSY@sanyung.com  
Http://www.sanyung.com

## SAN YUNG ELECTRIC HEAT MACHINE CO.,LTD.

HEAD OFFICE & FACTORY:  
NO.501,HSING NAN ROAD,CHI TSUO TSING, CHI CHOU  
HSIENG,CHANG HUA HSIEN,TAIWAN.  
TEL: 886-4-8896106~10  
FAX: 886-4-8896098  
E-mail:TSY@sanyung.com  
Http://www.sanyung.com

## 嘉善三永電爐工業有限公司

總公司：浙江省嘉善經濟開發區晉億大道16號  
工廠  
電話：86-573-84184395（代表）  
傳真：86-573-84184317  
E-mail:JSY@sanyung.com  
Http://www.sanyung.com

## JIASHAN SANYUNG ELECTRIC FURNACE INDUSTRY CO.,LTD.

HEAD OFFICE/FACTORY:  
NO.16 GEM-YEAR ROAD,ECONOMIC DEVELOPMENT ZONE,  
JIASHAN,ZHEJIANG,PEOPLE'S REPUBLIC OF CHINA  
TEL: 86-573-84184395(REP.) FAX: 86-573-84184317  
E-mail:JSY@sanyung.com  
Http://www.sanyung.com

SAN YUNG  
ELECTRIC HEAT TREATMENT  
FURNACES